



**Price**

**£1,300,000**

**Freehold**

4x  2x  3x 

**Chestnut Walk,  
Woodford Green, Essex,  
IG8**





## Main features

- Striking double fronted detached house
- Principle bedroom with ensuite
- Heated swimming pool with pool house
- Beautiful landscaped garden
- Highly sought after location within close proximity of good schools both state and independent

## Accommodation

### GROUND FLOOR

Entrance Hall  
 Sitting Room: 18'8 x 12'10 (5.69m x 3.91m)  
 Dining Room : 16'9 x 14'5 (5.11m x 4.40m)  
 Kitchen/Breakfast Room: 22'8 x 18'8 (6.91m x 5.69m)  
 Study: 8'6 x 8'2 (2.59m x 2.49m)  
 Cloakroom

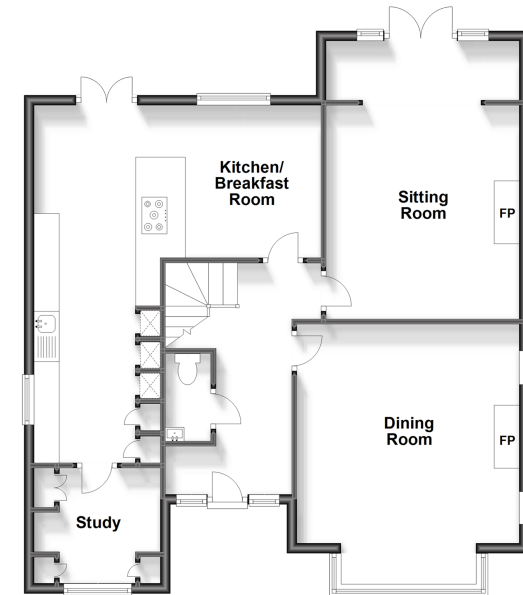
### FIRST FLOOR

Landing  
 Bedroom 1: 17'5 x 13'5 (5.31m x 4.09m)  
 En-Suite  
 Bedroom 2: 13'9 x 12'10 (4.19m x 3.91m)  
 Bedroom 3: 13'9 x 8'6 (4.19m x 2.59m)  
 Bedroom 4: 10'2 x 10'2 (3.10m x 3.10m)  
 Bathroom  
 Separate Cloakroom

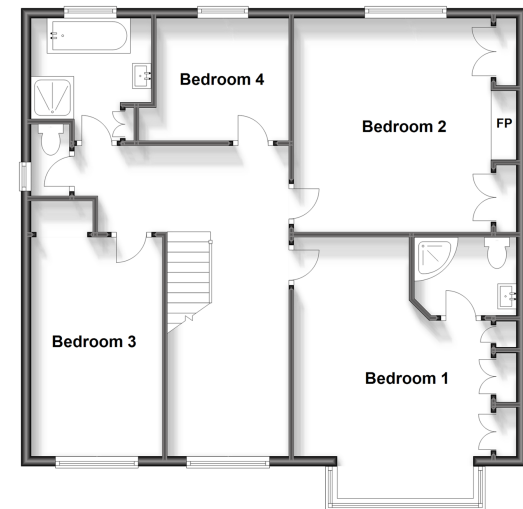
### OUTSIDE

Gated Entrance  
 Off Street Parking  
 Rear Garden  
 Heated Swimming Pool  
 Detached pool house: 12'2 x 8'10 (3.71m x 2.69m)  
 Storage: 7'10 x 7'3 (2.39m x 2.21m)

Ground Floor  
 Approx. 962.5 sq. feet



First Floor  
 Approx. 917.0 sq. feet



**Call Woodford Green - 020 8505 6343 ■ [douglasallen.co.uk](http://douglasallen.co.uk)**

- A private rental licensing scheme applies to some properties in this area, please contact us before proceeding
- Legal advice should be taken to verify fixtures/fittings, planning, alterations and/or lease details
- Appliances & services are untested, dimensions are approximate and floor plans are not to scale



53618811/20240212/LA/CS