



Price
£475,000

Freehold

2x  1x  1x 

**Waltham Road,
Woodford Green, Essex,
IG8**

OVER 60?

Secure this property
for up to **59% less!**

 **DOUGLAS
ALLEN**
Helping you move forwards



Main features

- Pretty period cottage with landscaped garden
- Close to local parade of shops
- Walking distance to primary & secondary schools
- Well presented, styled and maintained by current owners so you can move in, relax and enjoy

Accommodation

GROUND FLOOR

Entrance Hall

Lounge/Dining Room: 22'6 x 13'2
(6.86m x 4.02m)

Kitchen: 16'4 x 7'9 (4.98m x 2.36m)

FIRST FLOOR

Landing

Bedroom 1: 13'2 x 10'11 (4.02m x 3.33m)

Bedroom 2: 10'11 x 7'0 (3.33m x 2.14m)

Bathroom

OUTSIDE

Front Garden

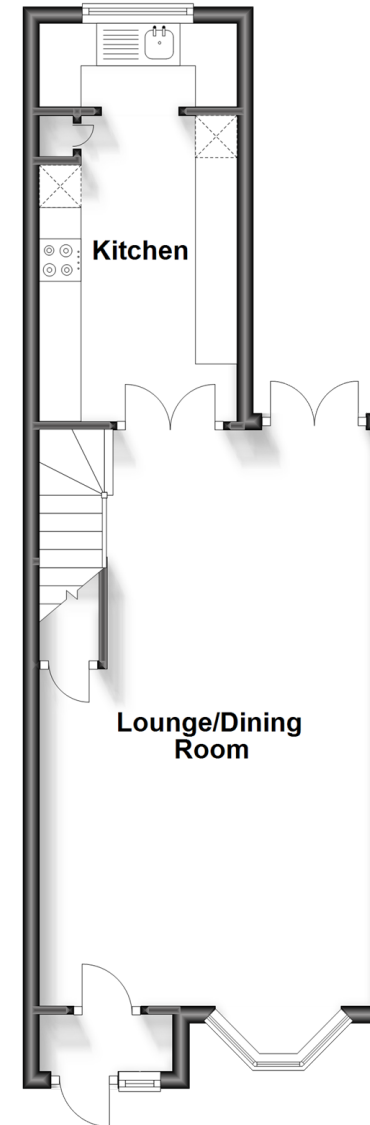
Rear Garden

Call Woodford Green - 020 8505 6343 ■ douglasallen.co.uk

- A private rental licensing scheme applies to some properties in this area, please contact us before proceeding
- Legal advice should be taken to verify fixtures/fittings, planning, alterations and/or lease details
- Appliances & services are untested, dimensions are approximate and floor plans are not to scale
- Through a Homewise Home For Life Plan people aged 60+ can secure this property for up to 59% less, by purchasing a Lifetime Lease.

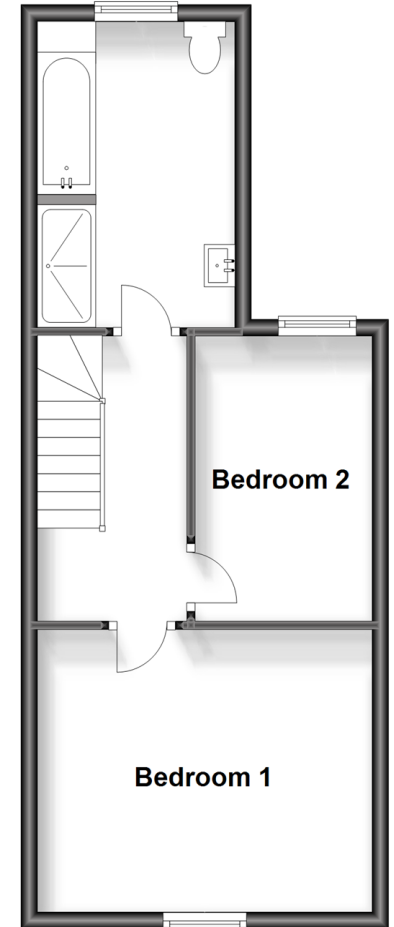
Ground Floor

Approx. 40.1 sq. metres (431.8 sq. feet)



First Floor

Approx. 36.2 sq. metres (389.5 sq. feet)



53618778/20231014/LA/SF