



Price
£550,000

Freehold

4x  2x  2x 

**Chigwell Road,
Woodford Green, Essex,
IG8**

OVER 60?

Secure this property
for up to **59% less!**

 **DOUGLAS
ALLEN**
Helping you move forwards



Main features

- Modern style home walking distance to Woodford Station
- Parade of shops opposite
- Parking space at rear
- Local schools nearby and commuters can take a bus to Chigwell or South Woodford tube station

Accommodation

GROUND FLOOR

Entrance Hall
 Lounge: 15'8 x 13'7 (4.78m x 4.14m)
 Dining Area: 10'8 x 9'2 (3.25m x 2.80m)
 Kitchen: 9'2 x 7'11 (2.80m x 2.41m)
 Cloakroom

FIRST FLOOR

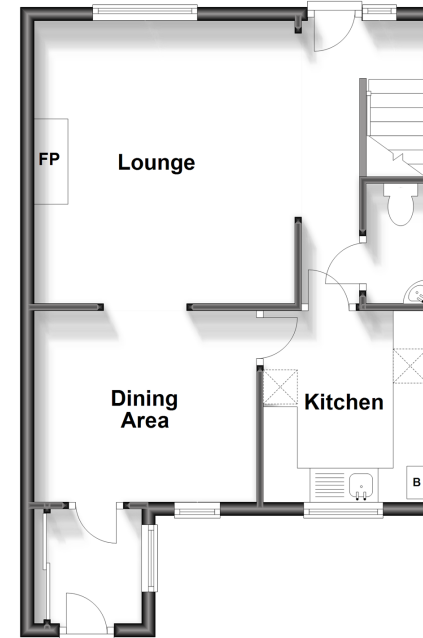
Landing
 Bedroom 1: 10'7 x 10'0 (3.23m x 3.05m)
 En suite Shower Room
 Bedroom 2: 9'11 x 8'10 (3.02m x 2.69m)
 Bedroom 3: 10'10 x 6'7 (3.30m x 2.01m)
 Bedroom 4: 9'11 x 6'5 (3.02m x 1.96m)
 Bathroom

OUTSIDE

Rear Off Road Parking
 Rear Garden

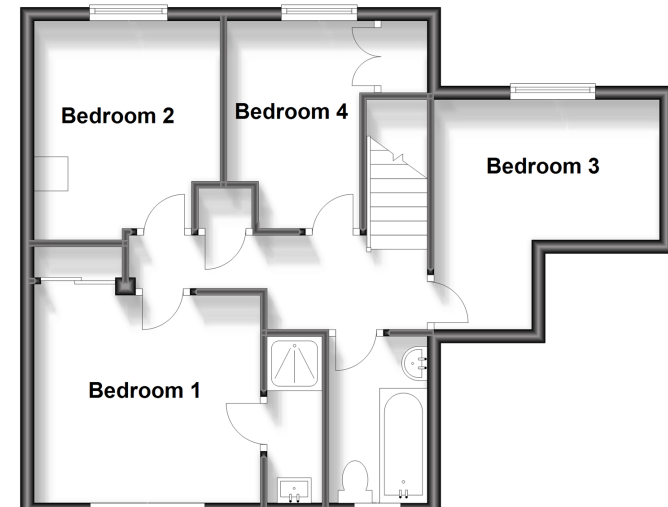
Ground Floor

Approx. 36.3 sq. metres (390.9 sq. feet)



First Floor

Approx. 49.8 sq. metres (535.7 sq. feet)



Call Woodford Green - 020 8505 6343 ■ douglasallen.co.uk

- A private rental licensing scheme applies to some properties in this area, please contact us before proceeding
- Legal advice should be taken to verify fixtures/fittings, planning, alterations and/or lease details
- Appliances & services are untested, dimensions are approximate and floor plans are not to scale
- Through a Homewise Home For Life Plan people aged 60+ can secure this property for up to 59% less, by purchasing a Lifetime Lease.



53618777/20230915/LA/SF