



OVER 60?

Secure this property
for up to **59% less!**

Price

£300,000

Leasehold

3x  1x  1x 

**Orsett Terrace,
Woodford Green, Essex,
IG8**



**DOUGLAS
ALLEN**

Helping you move forwards



Main features

- Split level maisonette with garden
- Access to Woodford Central Line Station
- Highly regarded local schools
- Property needs some refurbishment but offers spacious rooms
- Chain-free sale

Accommodation

GROUND FLOOR

Entrance Hall

Kitchen/Breakfast Room: 14'2 x 8'6 (4.32m x 2.59m)

Lounge/Diner: 14'11 x 14'4 (4.55m x 4.37m)

Cloakroom

FIRST FLOOR

Bedroom 1: 14'4 x 8'10 (4.37m x 2.69m)

Bedroom 2: 13'9 x 8'2 (4.19m x 2.49m)

Bedroom 3: 10'10 x 6'6 (3.30m x 1.98m)

Bathroom

OUTSIDE

Garden

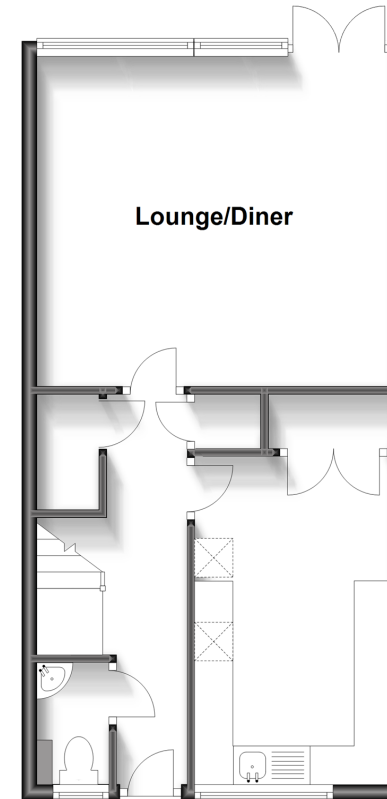
Communal Parking

Call Woodford Green - 020 8505 6343 ■ douglasallen.co.uk

- A private rental licensing scheme applies to some properties in this area, please contact us before proceeding
- Legal advice should be taken to verify fixtures/fittings, planning, alterations and/or lease details
- Appliances & services are untested, dimensions are approximate and floor plans are not to scale
- Through a Homewise Home For Life Plan people aged 60+ can secure this property for up to 59% less, by purchasing a Lifetime Lease.

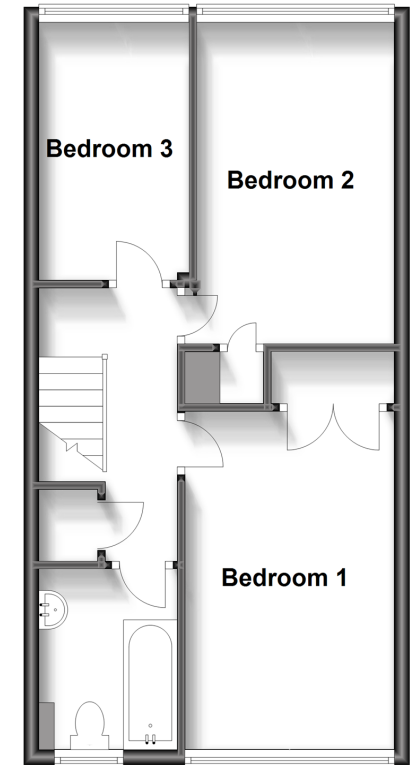
Ground Floor

Approx. 43.7 sq. metres (470.4 sq. feet)



First Floor

Approx. 43.5 sq. metres (468.7 sq. feet)



53618764/20230531/DE/SF