



OVER 60?

Secure this property
for up to **59% less!**

Price

£155,000

Leasehold

1x  1x  1x 

**Tamar Square,
Woodford Green, Essex,
IG8**



**DOUGLAS
ALLEN**

Helping you move forwards



Main features

- Studio flat very close to Woodford Station
- Beautiful views across Woodford
- External Storage & Communal Gardens
- Cash Buyers only
- Allocated Parking

Accommodation

SIXTH FLOOR

Entrance Hall

Living Area: 16'10 x 15'0 (5.13m x 4.58m)

Kitchen Area: 7'0 x 4'11 (2.14m x 1.50m)

Bathroom

OUTSIDE

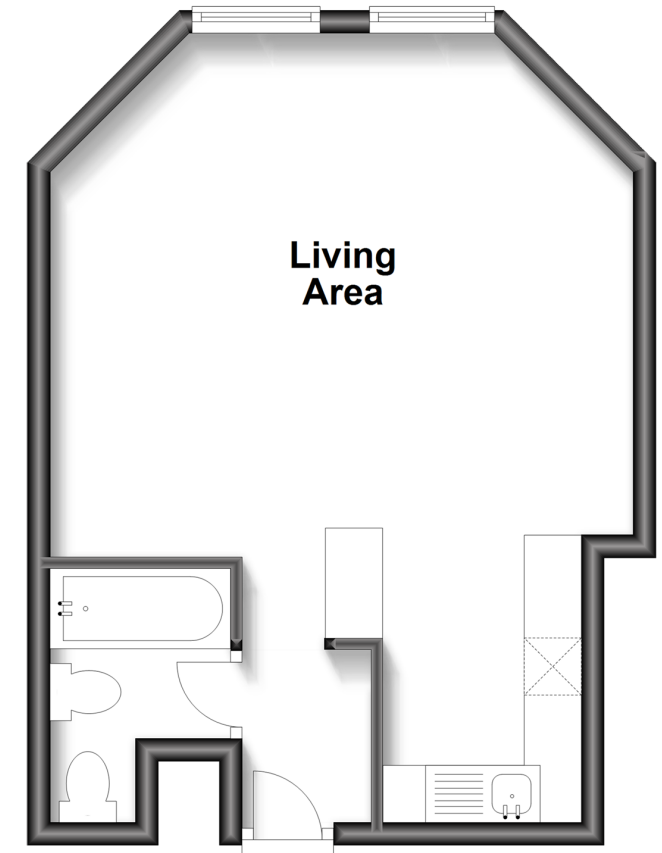
Communal Gardens

Allocated Parking

Storage

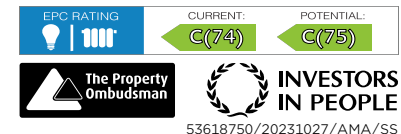
Sixth Floor

Approx. 31.9 sq. metres (343.2 sq. feet)



Call Woodford Green - 020 8505 6343 ■ douglasallen.co.uk

- A private rental licensing scheme applies to some properties in this area, please contact us before proceeding
- Legal advice should be taken to verify fixtures/fittings, planning, alterations and/or lease details
- Appliances & services are untested, dimensions are approximate and floor plans are not to scale
- Through a Homewise Home For Life Plan people aged 60+ can secure this property for up to 59% less, by purchasing a Lifetime Lease.



53618750/20231027/AMA/SS