



**OVER 60?**

Secure this property  
for up to **59% less!**

**Price**

**£330,000**

**Leasehold**

2x  1x  1x 

**Village Heights,  
Chingford Lane,  
Woodford Green, Essex,  
IG8**



**DOUGLAS  
ALLEN**

Helping you move forwards





## Main features

- **Spacious & bright first floor retirement flat**
- **Very good condition**
- **Easy reach to Central line station**
- **Close to shops and restaurants**
- **Chain-free**

## Accommodation

### FIRST FLOOR

#### Entrance Hall

Lounge : 16'5 x 13'3 (5.01m x 4.04m)

Dining Area: 9'3 x 8'10 (2.82m x 2.69m)

Kitchen: 7'10 x 6'10 (2.39m x 2.08m)

Bedroom 1: 12'3 x 8'9 (3.74m x 2.67m)

Bedroom 2: 9'4 x 7'2 (2.85m x 2.19m)

Bathroom

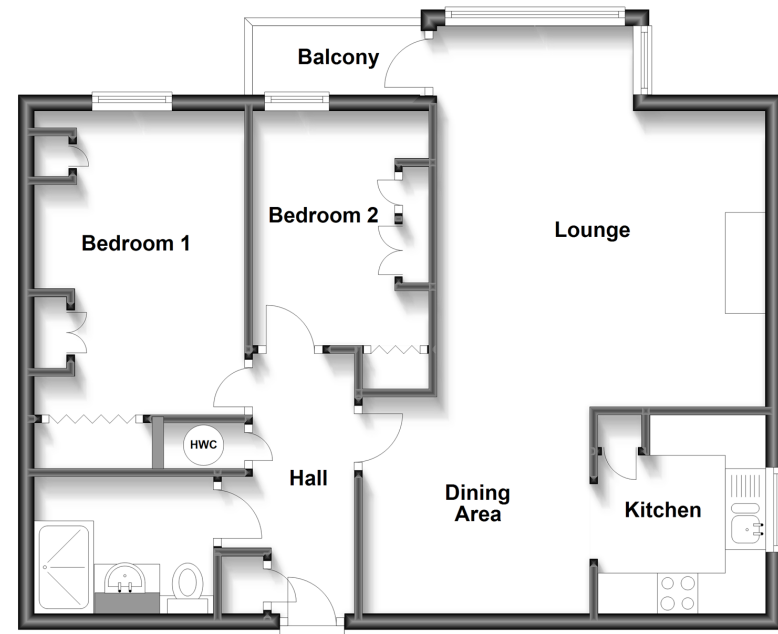
### OUTSIDE

Balcony

Communal Garden

### First Floor

Approx. 58.9 sq. metres (634.5 sq. feet)



**Call Woodford Green - 020 8505 6343 ■ [douglasallen.co.uk](http://douglasallen.co.uk)**

- A private rental licensing scheme applies to some properties in this area, please contact us before proceeding
- Appliances & services are untested, dimensions are approximate and floor plans are not to scale

- Legal advice should be taken to verify fixtures/fittings, planning, alterations and/or lease details
- Through a Homewise Home For Life Plan people aged 60+ can secure this property for up to 59% less, by purchasing a Lifetime Lease.



53618697/20230213/SF/SS