



Price

£190,000

Leasehold

2x  1x  1x 

**New Jubilee Court,
Grange Avenue,
Woodford Green, Essex,
IG8**

OVER 60?

Secure this property
for up to **59% less!**

 **DOUGLAS
ALLEN**
Helping you move forwards



Main features

- Over 55's retirement flat
- Well presented with sunny balcony
- Communal lounge with kitchen on ground floor and first floor with laundry room and guest bedroom
- Close to Woodford High Road with restaurants, post office and pharmacy
- Chain-free

Accommodation

GROUND FLOOR

Entrance Hall

FIRST FLOOR

Kitchen: 9'3 x 5'1 (2.82m x 1.55m)

Lounge: 15'11 x 13'3 (4.85m x 4.04m)

Bedroom 1: 17'0 x 9'1 (5.19m x 2.77m)

Bedroom 2: 10'0 x 9'1 (3.05m x 2.77m)

Shower Room

OUTSIDE

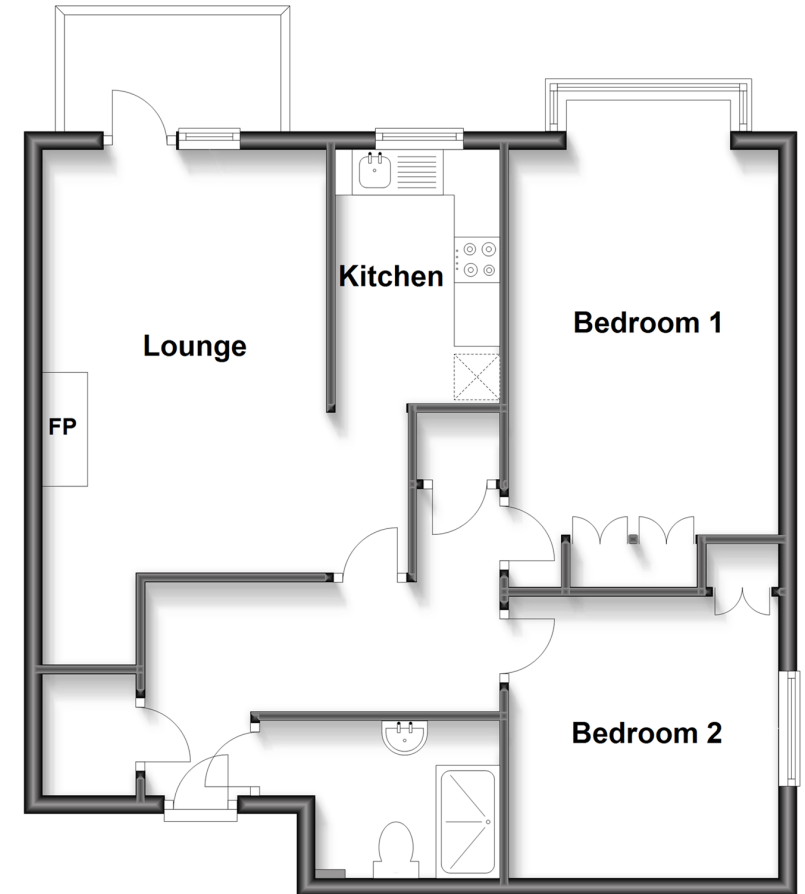
Balcony
Communal Garden
Resident Parking

Call Woodford Green - 020 8505 6343 ■ douglasallen.co.uk

- A private rental licensing scheme applies to some properties in this area, please contact us before proceeding
- Legal advice should be taken to verify fixtures/fittings, planning, alterations and/or lease details
- Appliances & services are untested, dimensions are approximate and floor plans are not to scale
- Through a Homewise Home For Life Plan people aged 60+ can secure this property for up to 59% less, by purchasing a Lifetime Lease.

First Floor

Approx. 62.4 sq. metres (671.9 sq. feet)



53618683/20231018/SP/SF