



Price
£575,000

Freehold

4x  1x  1x 

**Buckhurst Way,
Buckhurst Hill, Essex,
IG9**

OVER 60?

Secure this property
for up to **59% less!**

 **DOUGLAS
ALLEN**
Helping you move forwards



Main features

- Offers in excess of £600,000
- Terraced house extended into the loft
- Modern, stylish & bright throughout
- Large rear garden
- Very close to Roding Central Line Valley Tube Station

Accommodation

GROUND FLOOR

Entrance Hall
 Lounge: 14'8 x 11'7 (4.47m x 3.53m)
 Dining Room: 12'10 x 10'0 (3.91m x 3.05m)
 Kitchen: 8'3 x 6'7 (2.52m x 2.01m)

FIRST FLOOR

Landing
 Bedroom 2: 14'5 x 10'9 (4.40m x 3.28m)
 Bedroom 3: 11'7 x 10'6 (3.53m x 3.20m)
 Bedroom 4: 7'6 x 6'2 (2.29m x 1.88m)
 Bathroom

SECOND FLOOR

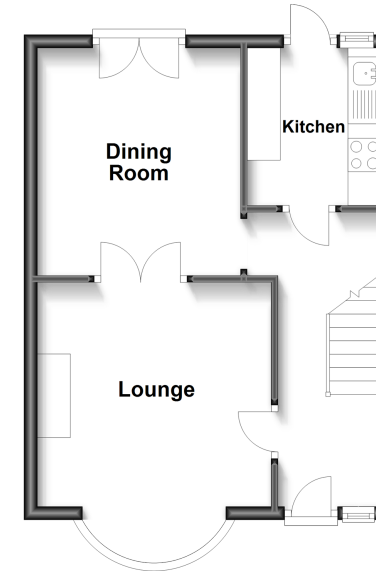
Landing
 Bedroom 1: 14'11 x 11'11 (4.55m x 3.63m)

OUTSIDE

Front Garden
 Off Road Parking
 Rear Garden

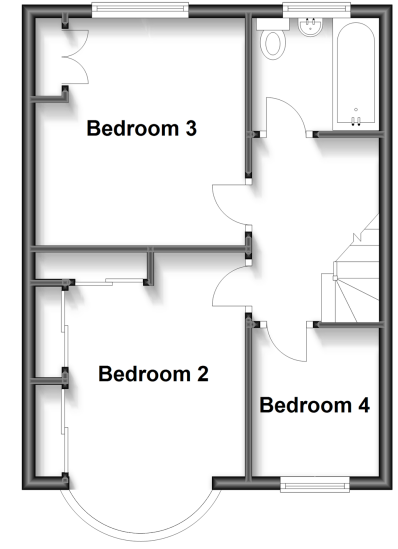
Ground Floor

Approx. 36.1 sq. metres (388.1 sq. feet)



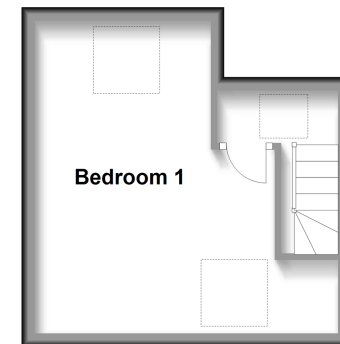
First Floor

Approx. 36.1 sq. metres (388.1 sq. feet)



Second Floor

Approx. 19.4 sq. metres (208.9 sq. feet)



Call Woodford Green - 020 8505 6343 ■ douglasallen.co.uk

- A private rental licensing scheme applies to some properties in this area, please contact us before proceeding
- Legal advice should be taken to verify fixtures/fittings, planning, alterations and/or lease details
- Appliances & services are untested, dimensions are approximate and floor plans are not to scale
- Through a Homewise Home For Life Plan people aged 60+ can secure this property for up to 59% less, by purchasing a Lifetime Lease.



53618128/20230510/SS/SF