



OVER 60?

Secure this property
for up to **59% less!**

Price

£385,000

Leasehold

2x  1x  1x 

**Finchingfield Avenue,
Woodford Green, Essex
IG8**



**DOUGLAS
ALLEN**

Helping you move forwards



Main features

- 2 bedroom 1st floor maisonette
- Close to Woodford Central line station and shops
- Off road parking and large rear garden
- Highly sought after schools
- Chain free

Accommodation

FIRST FLOOR

Entrance Hall

Lounge/Diner: 15'7 x 11'5 (4.75m x 3.48m)

Kitchen: 11'8 x 11'0 (3.56m x 3.36m)

Bedroom 1: 12'4 x 11'6 (3.76m x 3.51m)

Bedroom 2: 11'5 x 10'0 (3.48m x 3.05m)

Bathroom

OUTSIDE

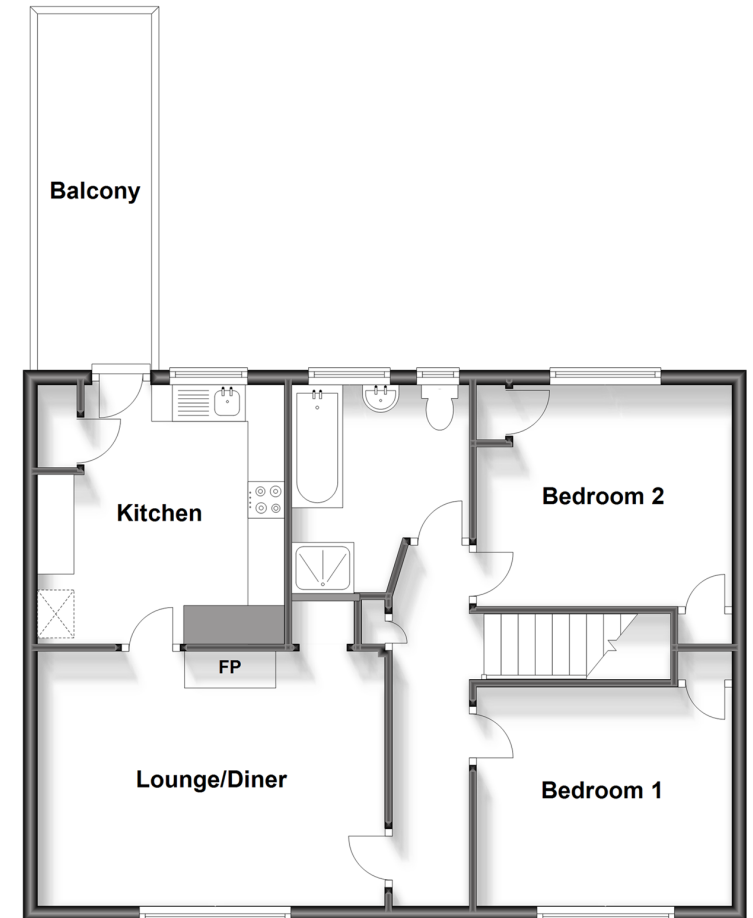
Balcony

Front Off Road Parking

Rear Garden

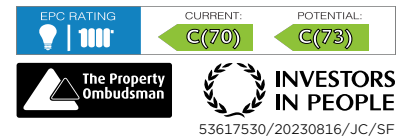
First Floor

Approx. 67.8 sq. metres (730.3 sq. feet)



Call Woodford Green - 020 8505 6343 ■ douglasallen.co.uk

- A private rental licensing scheme applies to some properties in this area, please contact us before proceeding
- Legal advice should be taken to verify fixtures/fittings, planning, alterations and/or lease details
- Appliances & services are untested, dimensions are approximate and floor plans are not to scale
- Through a Homewise Home For Life Plan people aged 60+ can secure this property for up to 59% less, by purchasing a Lifetime Lease.



53617530/20230816/JC/SF