



**Price**

**£210,000**

**Leasehold**

2x  2x  1x 

**Muir Place, Wickford,  
Essex, SS12**

**OVER 60?**

Secure this property  
for up to **59% less!**

 **DOUGLAS  
ALLEN**  
Helping you move forwards





## Main features

- Two bedroom ground floor flat
- Neutral/modern decor throughout
- Patio doors opening out to communal gardens
- Allocated parking space
- No onward chain

## Accommodation

### GROUND FLOOR

Communal Entrance Hallway

Entrance Door

Entrance Hallway

Kitchen: 12'1 x 6'2 (3.69m x 1.88m)

Lounge/Dining Room: 14'8 x 12'2 (4.47m x 3.71m)

Bedroom 1: 9'6 x 8'7 (2.90m x 2.62m)

Bedroom 2: 13'1 x 7'6 (3.99m x 2.29m)

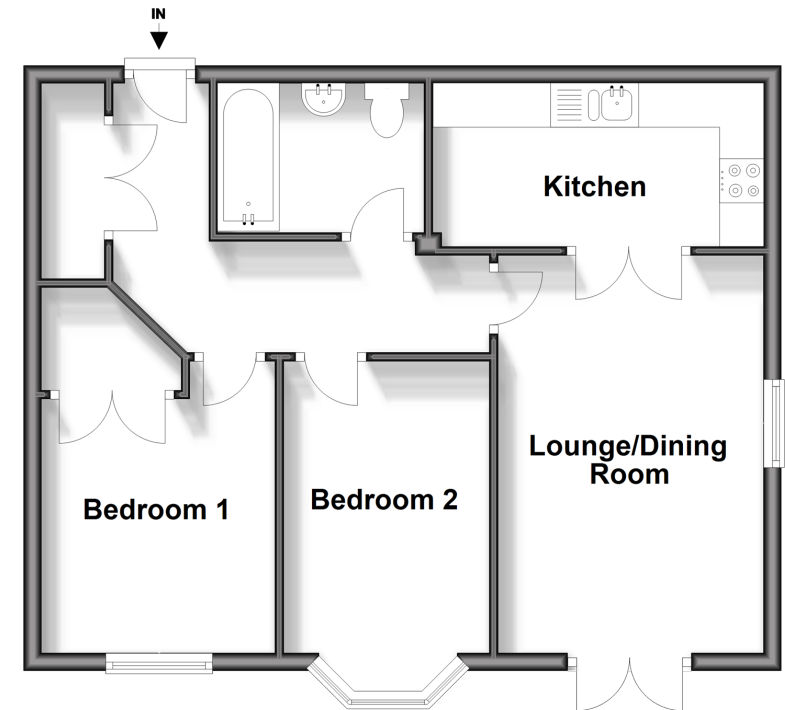
Bathroom

### OUTSIDE

Allocated Parking

## Ground Floor

Approx. 53.1 sq. metres (571.4 sq. feet)



**Call Wickford - 01268 561287 ■ [douglasallen.co.uk](http://douglasallen.co.uk)**

- Legal advice should be taken to verify fixtures/fittings, planning, alterations and/or lease details
- Appliances & services are untested, dimensions are approximate and floor plans are not to scale
- Through a Homewise Home For Life Plan people aged 60+ can secure this property for up to 59% less, by purchasing a Lifetime Lease.



53412813/20240304/GM/LC