



OVER 60?

Secure this property
for up to **59% less!**

Price

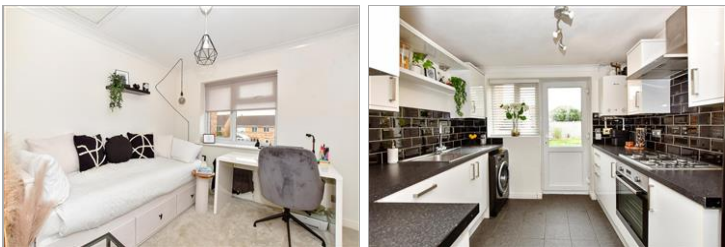
£335,000

Freehold

2x  1x  1x 

**Stewart Place, Wickford,
Essex, SS12**

 **DOUGLAS
ALLEN**
Helping you move forwards



Main features

- Two double bedroom terrace house
- Two allocated parking space's
- Side pedestrian access to garden from parking area.
- Modern decor throughout.
- Large rear garden
- Close to local amenities.

Accommodation

GROUND FLOOR

Entrance Hallway

Lounge/Dining Room: 15'5 x 11'0 (4.70m x 3.36m)

Kitchen: 9'0 x 9'0 (2.75m x 2.75m)

FIRST FLOOR

Landing

Bedroom 1: 15'3 x 8'7 (4.65m x 2.62m)

Bedroom 2: 11'5 x 9'0 (3.48m x 2.75m)

Bathroom

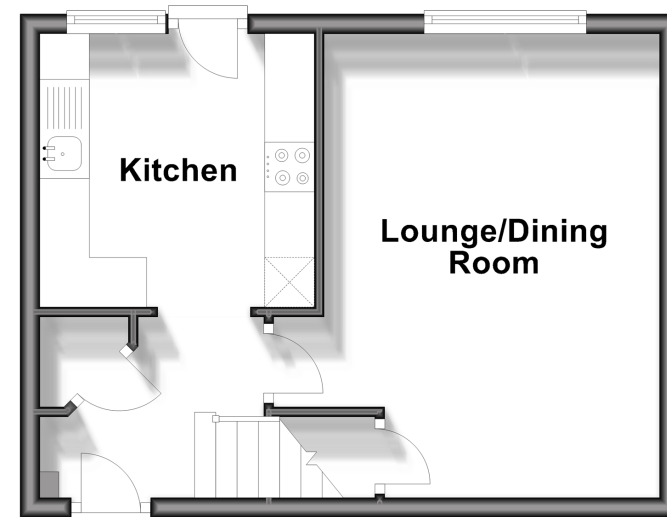
OUTSIDE

Rear Garden

2 Parking Spaces

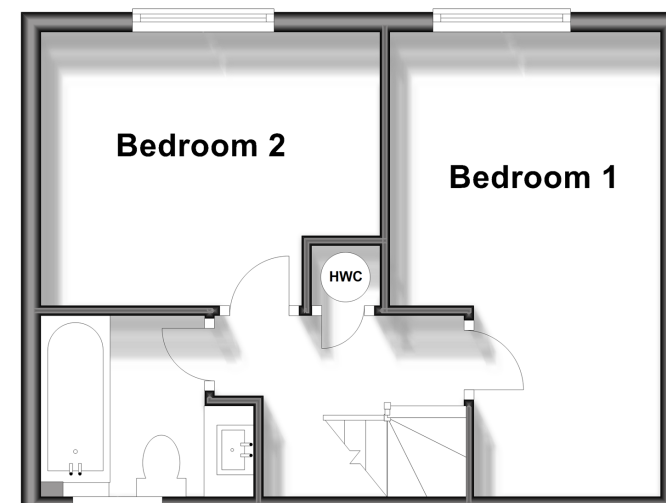
Ground Floor

Approx. 29.3 sq. metres (315.8 sq. feet)



First Floor

Approx. 29.3 sq. metres (315.8 sq. feet)



Call Wickford - 01268 561287 ■ douglasallen.co.uk

- Legal advice should be taken to verify fixtures/fittings, planning, alterations and/or lease details
- Appliances & services are untested, dimensions are approximate and floor plans are not to scale
- Through a Homewise Home For Life Plan people aged 60+ can secure this property for up to 59% less, by purchasing a Lifetime Lease.



53412809/20240314/GM/LC