



**Price**  
**£315,000**

**Freehold**

2x  1x  1x 

**Fletcher Drive,  
Wickford, Essex, SS12**

**OVER 60?**

Secure this property  
for up to **59% less!**

 **DOUGLAS  
ALLEN**  
Helping you move forwards





## Main features

- **Additional Conservatory**
- **Two allocated parking spaces**
- **Beautifully decorated**
- **Popular Wick Meadows development with easy access to Oakfield Primary School**
- **Ideal first time purchase / investment opportunity.**

## Accommodation

### GROUND FLOOR

Entrance Hallway

Kitchen: 9'4 x 6'3 (2.85m x 1.91m)

Lounge/Dining Area: 12'7 x 12'7 (3.84m x 3.84m)

Conservatory Area: 11'7 x 9'5 (3.53m x 2.87m)

### FIRST FLOOR

Landing

Bedroom 1 : 10'5 x 9'10 (3.18m x 3.00m)

Bedroom 2 : 9'5 x 6'4 (2.87m x 1.93m)

Bathroom

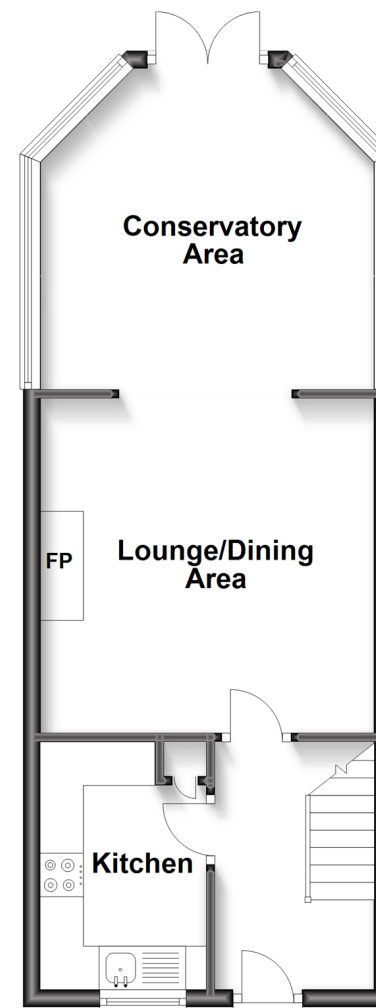
### OUTSIDE

Rear Garden

2 Allocated Parking Spaces

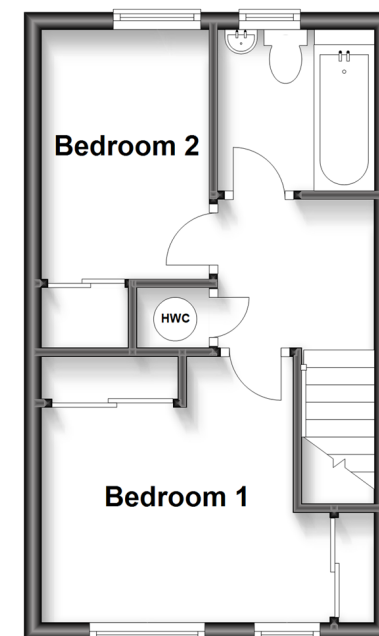
## Ground Floor

Approx. 39.7 sq. metres (427.0 sq. feet)



## First Floor

Approx. 26.3 sq. metres (283.0 sq. feet)



**Call Wickford - 01268 561287 ■ [douglasallen.co.uk](http://douglasallen.co.uk)**

- Legal advice should be taken to verify fixtures/fittings, planning, alterations and/or lease details
- Appliances & services are untested, dimensions are approximate and floor plans are not to scale
- Through a Homewise Home For Life Plan people aged 60+ can secure this property for up to 59% less, by purchasing a Lifetime Lease.



53412797 / 20240309/GM/AH