



Price
£325,000

Freehold

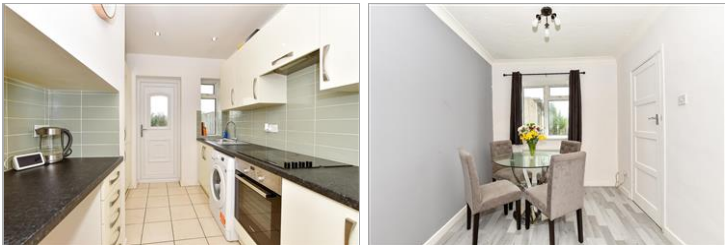
3x  1x  1x 

**Meadow Road,
Rettendon Common,
Chelmsford, Essex, CM3**

OVER 60?

Secure this property
for up to **59% less!**

 **DOUGLAS
ALLEN**
Helping you move forwards



Main features

- Off street parking
- Electric heating
- Modern fitted kitchen
- An excellent opportunity as a first time purchase/investment opportunity
- Being sold with no onward chain.

Accommodation

GROUND FLOOR

Entrance Hallway

Lounge/Dining Room: 19'9 x 10'5
(6.02m x 3.18m)

Kitchen: 11'10 x 7'11 (3.61m x 2.41m)

FIRST FLOOR

Landing

Bedroom 1: 12'6 x 12'1 (3.81m x 3.69m)

Bedroom 2: 8'2 x 7'5 (2.49m x 2.26m)

Bedroom 3: 8'2 x 7'11 (2.49m x 2.41m)

Bathroom

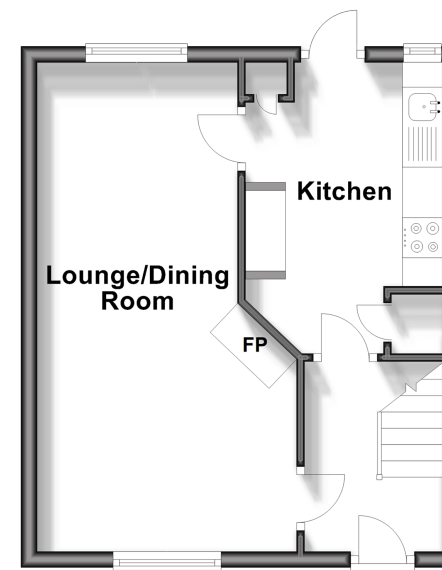
OUTSIDE

Rear Garden

Off Street Parking

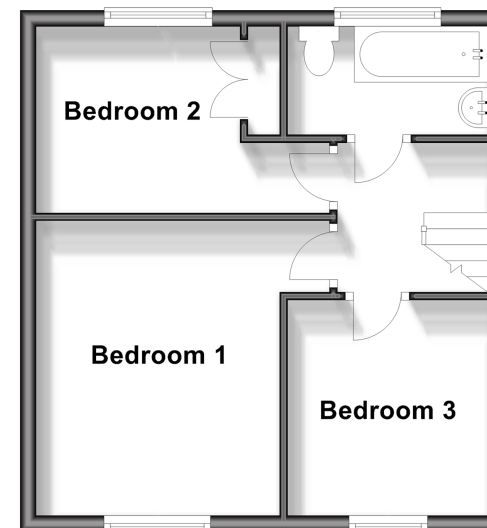
Ground Floor

Approx. 31.1 sq. metres (334.8 sq. feet)



First Floor

Approx. 34.7 sq. metres (373.4 sq. feet)



Call Wickford - 01268 561287 ■ douglasallen.co.uk

- Legal advice should be taken to verify fixtures/fittings, planning, alterations and/or lease details
- Appliances & services are untested, dimensions are approximate and floor plans are not to scale
- Through a Homewise Home For Life Plan people aged 60+ can secure this property for up to 59% less, by purchasing a Lifetime Lease.



53412786/20240330/GM/AH