



Price
£500,000

Freehold

3x  2x  2x 

**Lynfords Drive, Runwell,
Wickford, Essex, SS11**

OVER 60?

Secure this property
for up to **59% less!**

 **DOUGLAS
ALLEN**
Helping you move forwards

Accommodation

GROUND FLOOR

Entrance Porch

Entrance Hallway

Lounge: 22'6 x 11'7 (6.86m x 3.53m)

Dining Area

Family Room: 22'0 (6.71m) x 19'5 (5.92m)
narrowing to 10'0 minimum (3.05m)

Kitchen/Breakfast Area: 15'11 x 8'4 (4.85m x 2.54m)

Utility Room: 8'1 x 5'6 (2.47m x 1.68m)

Shower Room

FIRST FLOOR

Bedroom 1: 12'2 x 10'3 (3.71m x 3.13m)

Bedroom 2: 11'1 x 10'6 (3.38m x 3.20m)

Bedroom 3: 6'7 x 6'7 (2.01m x 2.01m)

Bathroom

OUTSIDE

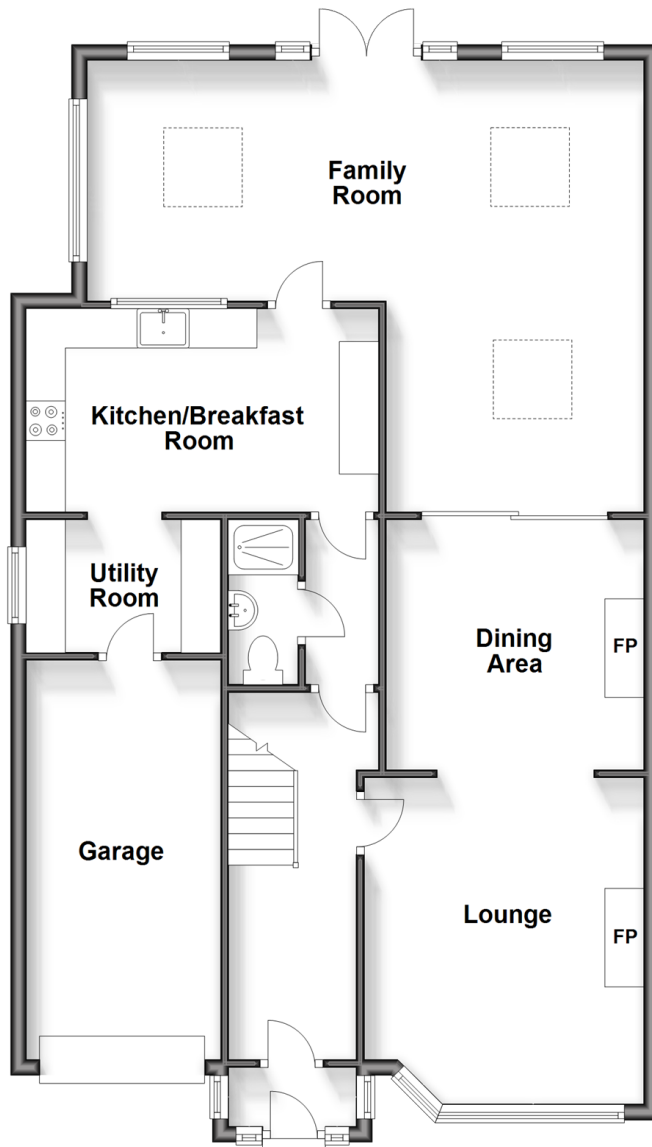
Garage

Off Street Parking

Rear Garden

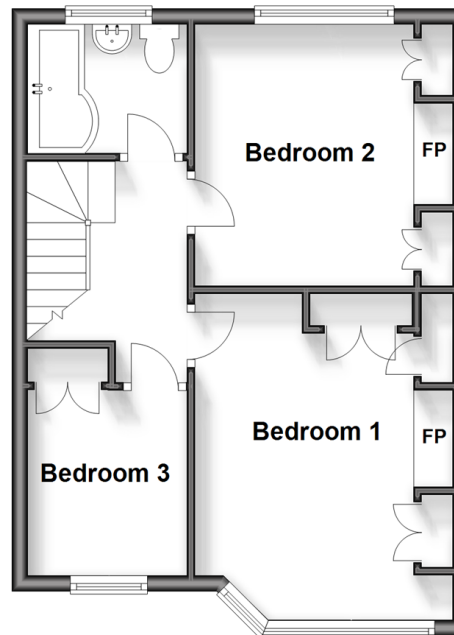
Ground Floor

Approx. 100.5 sq. metres (1081.8 sq. feet)



First Floor

Approx. 39.4 sq. metres (424.1 sq. feet)





Main features

- Three bedroom semi detached house
- Semi Rural location
- Garage and off street parking
- Large rear garden
- Offered with no onward chain



Nearest Schools

Primary Schools: Runwell Community Primary 0.5 miles, Hilltop Junior School 0.6 miles, Wickford Junior School 1.1 miles

Secondary Schools: Beauchamps High School 0.8 miles,



Transport Information

Train Stations: Wickford 1.0 miles, Battlesbridge 1.1 miles, Woodham Ferrers 3.3 miles



Address

Lynfords Drive, Runwell, Wickford, Essex, SS11



Directions

For directions to this property please contact us.



Call Wickford Branch 01268 561287 ■ douglasallen.co.uk



■ Legal advice should be taken to verify fixtures/fittings, planning, alterations and/or lease details ■ Appliances & services are untested, dimensions are approximate and floor plans are not to scale
■ Through a Homewise Home For Life Plan people aged 60+ can secure this property for up to 59% less, by purchasing a Lifetime Lease.



53412764/20240313/LC/LC