



OVER 60?

Secure this property
for up to **59% less!**

Price

£325,000

Freehold

2x  1x  1x 

**Muir Place, Wickford,
Essex, SS12**



**DOUGLAS
ALLEN**

Helping you move forwards



Main features

- Garage with off street parking
- Downstairs cloakroom
- Attractively decorated
- An ideal first time purchase on the popular Wick Meadows development
- Within close proximity to Wickford High Street and Town Centre.

Accommodation

GROUND FLOOR

Entrance Hallway

Kitchen: 11'8 x 6'8 (3.56m x 2.03m)

Lounge/Diner: 13'8 x 13'6 (4.17m x 4.12m)

Cloakroom

FIRST FLOOR

Landing

Bedroom 1: 13'1 x 8'10 (3.99m x 2.69m)

Bedroom 2: 13'8 x 7'3 (4.17m x 2.21m)

Bathroom

OUTSIDE

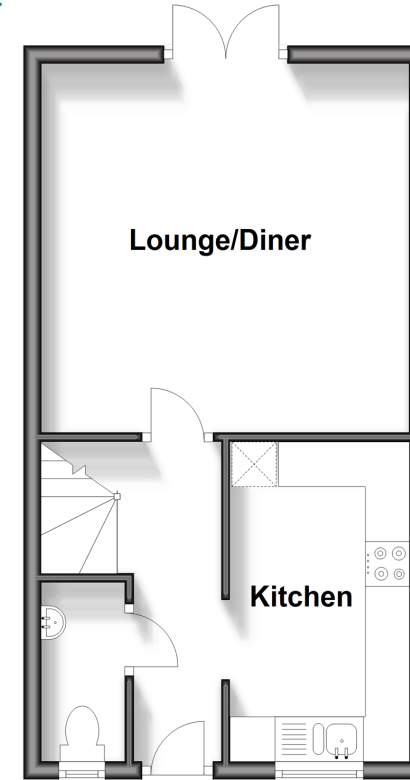
Rear Garden

Garage

Off Street Parking

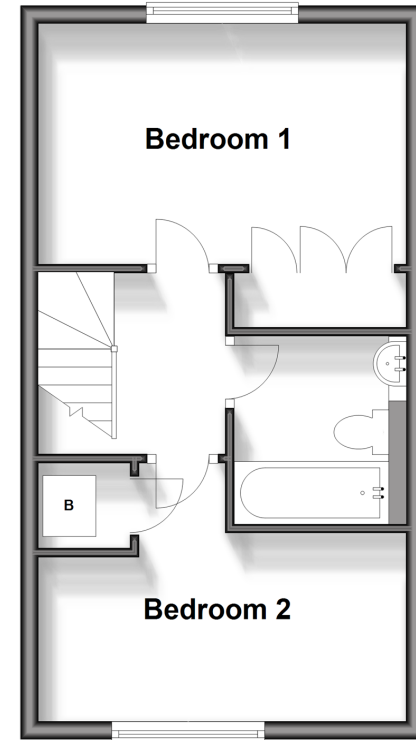
Ground Floor

Approx. 32.5 sq. metres (349.5 sq. feet)



First Floor

Approx. 32.5 sq. metres (349.5 sq. feet)



Call Wickford - 01268 561287 ■ douglasallen.co.uk

- If buying to let, the energy rating will need to be improved to at least 'E' rating before you can let the property
- Legal advice should be taken to verify fixtures/fittings, planning, alterations and/or lease details
- Appliances & services are untested, dimensions are approximate and floor plans are not to scale
- Through a Homewise Home For Life Plan people aged 60+ can secure this property for up to 59% less, by purchasing a Lifetime Lease.



53412760/20240203/GM/AH