



Price
£400,000

Freehold

3x  1x  1x 

**Swan Lane, Wickford,
Essex, SS11**

OVER 60?

Secure this property
for up to **59% less!**

 **DOUGLAS
ALLEN**
Helping you move forwards



Main features

- Large frontage with off street parking
- Garage
- Extended kitchen
- Ideal family home being sold with No onward chain
- Popular Swan Lane location

Accommodation

GROUND FLOOR

Entrance Hallway

Lounge/Dining Room: 14'4 x 11'5 (4.37m x 3.48m)

Kitchen/Breakfast Room: 10'6 x 8'10 (3.20m x 2.69m)

FIRST FLOOR

Landing

Bedroom 1: 14'3 x 10'4 (4.35m x 3.15m)

Bedroom 2 : 10'8 x 10'6 (3.25m x 3.20m)

Bedroom 3: 8'5 x 7'3 (2.57m x 2.21m)

Bathroom

OUTSIDE

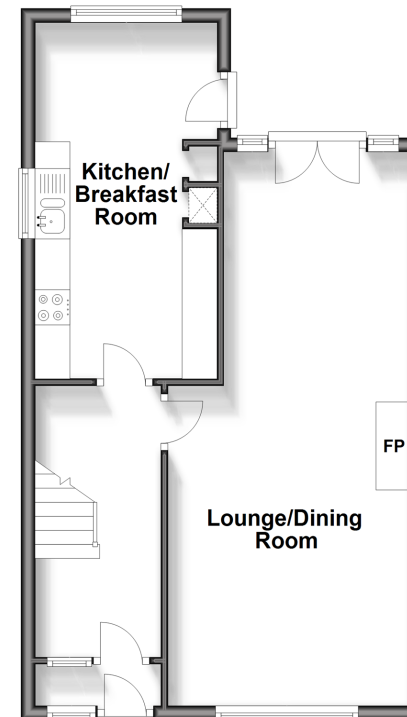
Rear Garden

Garage

Off Street Parking

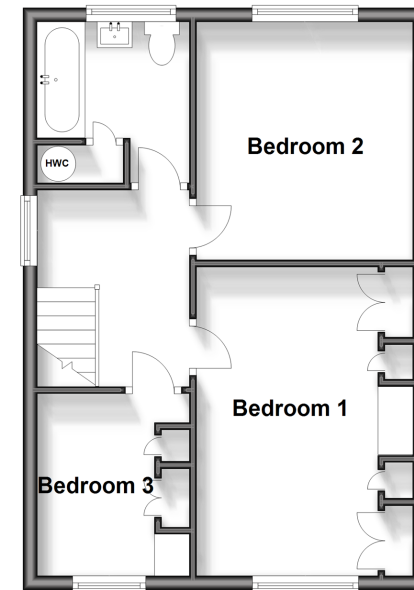
Ground Floor

Approx. 47.1 sq. metres (507.5 sq. feet)



First Floor

Approx. 42.4 sq. metres (456.0 sq. feet)



Call Wickford - 01268 561287 ■ douglasallen.co.uk

- Legal advice should be taken to verify fixtures/fittings, planning, alterations and/or lease details
- Appliances & services are untested, dimensions are approximate and floor plans are not to scale
- Through a Homewise Home For Life Plan people aged 60+ can secure this property for up to 59% less, by purchasing a Lifetime Lease.



53412751/20240103/GM/AH