



Price
£315,000

Freehold

3x  2x  1x 

**Ruthven Close,
Wickford, Essex, SS12**

 **DOUGLAS
ALLEN**
Helping you move forwards



Main features

- 3 bedroom mid terrace house
- Conservatory
- 2 x allocated parking spaces
- Catchment of Oakfield Primary & Bromfords Secondary Schools
- Offered with vacant possession

Accommodation

ENTRANCE DOOR

Entrance Hall

Lounge: 14'3 x 12'3 (4.35m x 3.74m)

Kitchen / Diner: 17'7 x 9'6 (5.36m x 2.90m)

Conservatory

FIRST FLOOR LANDING

Landing

Bedroom 1: 11'9 x 7'9 (3.58m x 2.36m)

En suite shower room

Bedroom 2: 8'11 x 7'9 (2.72m x 2.36m)

Bedroom 3: 8'9 x 6'2 (2.67m x 1.88m)

Bathroom

OUTSIDE

Rear garden

2 x Allocated parking spaces

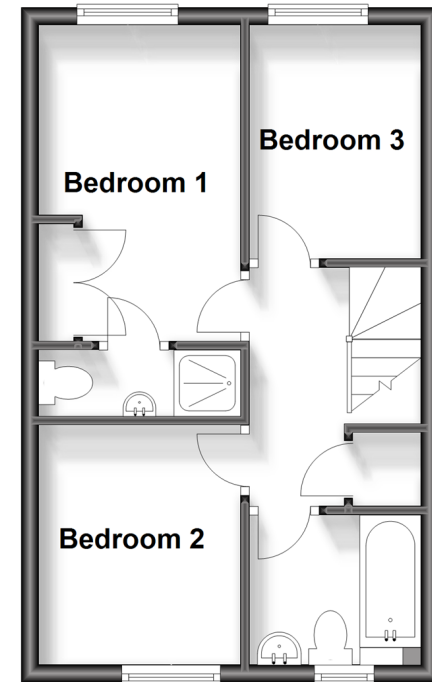
Ground Floor

Approx. 32.2 sq. metres (347.1 sq. feet)



First Floor

Approx. 32.1 sq. metres (345.8 sq. feet)



Call Wickford - 01268 561287 ■ douglasallen.co.uk

- Legal advice should be taken to verify fixtures/fittings, planning, alterations and/or lease details
- Appliances & services are untested, dimensions are approximate and floor plans are not to scale



53412679/20230919/AH/SP