



**Price**  
**£435,000**

**Freehold**

3x  2x  2x 

**Torquay Close, Rayleigh,  
Essex, SS6**



## Main features

- Beautiful, large 3/4 bedroom chalet house.
- Open plan living, dining and kitchen.
- 3/4 large bedrooms.
- 2 stunning bathrooms.
- Completion March 2024 due to sellers buying a New Build home.

## Accommodation

### GROUND FLOOR

Entrance Hall

Kitchen: 9'7 x 8'11 (2.92m x 2.72m)

Dining/Family Area: 20'4 x 10'0 (6.20m x 3.05m)

Lounge: 15'6 x 9'11 (4.73m x 3.02m)

Bedroom 3

Cloakroom

### FIRST FLOOR

Landing

Bedroom 1: 13'8 x 12'2 (4.17m x 3.71m)

En-Suite

Bedroom 2: 14'2 x 11'8 (4.32m x 3.56m)

Bathroom

### OUTSIDE

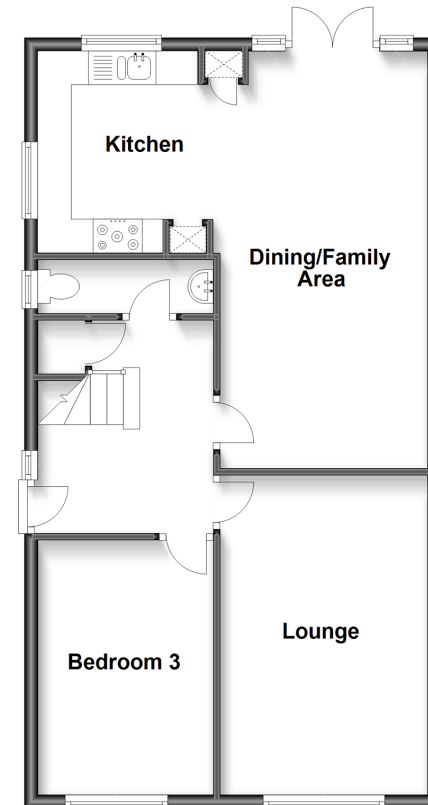
Garage

Off Street Parking

Rear Garden

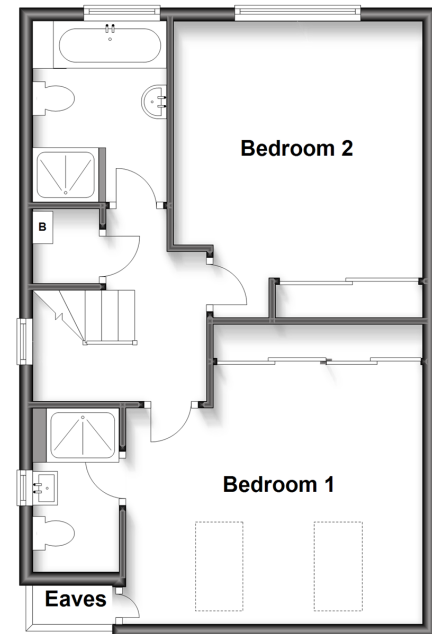
### Ground Floor

Approx. 63.8 sq. metres (686.8 sq. feet)



### First Floor

Approx. 50.7 sq. metres (545.4 sq. feet)



**Call Wickford - 01268 561287 ■ [douglasallen.co.uk](http://douglasallen.co.uk)**

- Legal advice should be taken to verify fixtures/fittings, planning, alterations and/or lease details
- Appliances & services are untested, dimensions are approximate and floor plans are not to scale



53412575/20230615/SP/SP