



Price
£575,000

Freehold

4x  2x  3x 

**London Mews, London
Road, Wickford, Essex,
SS12**

OVER 60?

Secure this property
for up to **59% less!**



Video Tour available



**DOUGLAS
ALLEN**

Helping you move forwards

Accommodation

GROUND FLOOR

Entrance Hall

Sitting Room: 11'7 x 11'2 (3.53m x 3.41m)

Kitchen/Breakfast Room: 14'4 x 14'3 (4.37m x 4.35m)

Family Room: 11'6 x 9'4 (3.51m x 2.85m)

Dining Room: 14'1 x 11'7 (4.30m x 3.53m)

Office: 8'7 x 7'4 (2.62m x 2.24m)

FIRST FLOOR

Landing

Bedroom 1 : 15'8 x 11'7 (4.78m x 3.53m)

En-Suite

Bedroom 2: 11'7 x 11'2 (3.53m x 3.41m)

Bedroom 3: 14'4 x 9'5 (4.37m x 2.87m)

Bedroom 4: 10'9 x 10'4 (3.28m x 3.15m)

Bathroom

OUTSIDE

Rear Garden

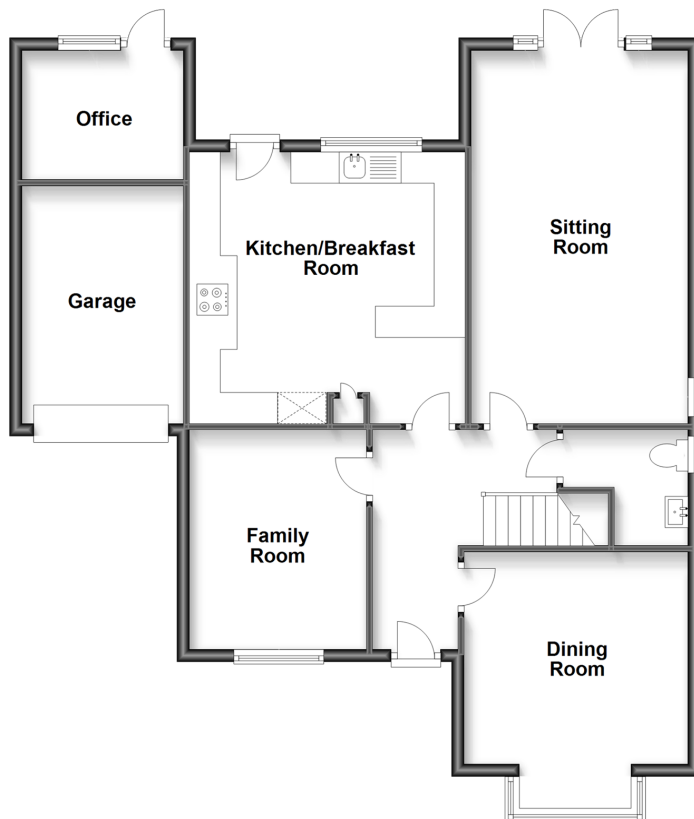
Cabin

Garage

Off Street Parking

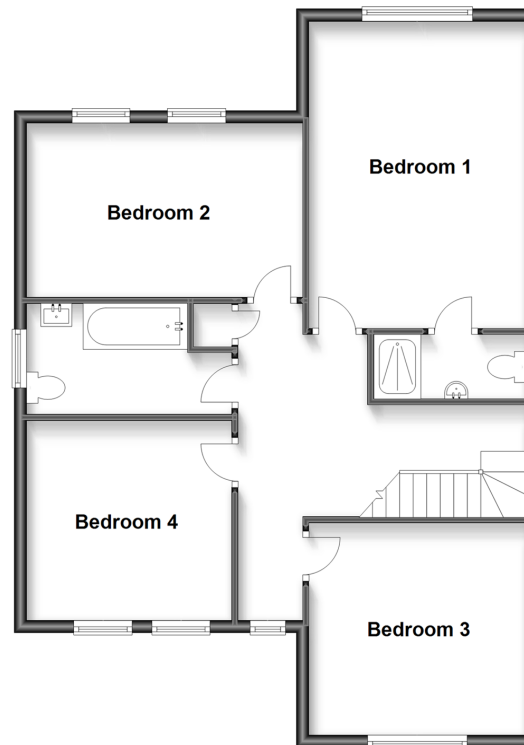
Ground Floor

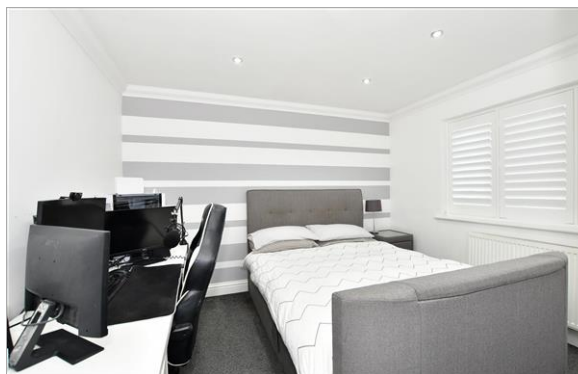
Approx. 77.1 sq. metres (829.5 sq. feet)



First Floor

Approx. 76.2 sq. metres (820.3 sq. feet)





Main features

- Outstanding four bedroom detached family home.
- Three ground floor reception rooms.
- Quiet position within a small cul-de-sac.
- Attractive low maintenance rear garden offering artificial lawn, patio area and cabin.
- Popular location as is within close proximity to Wickford High Street and mainline Railway Station



Nearest Schools

Primary Schools: Grange Primary 0.2 miles, Wickford Junior School 0.4 miles, North Crescent Primary 0.4 miles

Secondary Schools: The Bromfords School 0.3 miles, Castledon School 0.5 miles, Beauchamps High School 1.3



Transport Information

Train Stations: Wickford 0.5 miles, Battlesbridge 2.5 miles, Basildon 3.7 miles



Address

London Mews, London Road, Wickford, Essex, SS12



Directions

For directions to this property please contact us.



Call Wickford Branch 01268 561287 ■ douglasallen.co.uk



- Legal advice should be taken to verify fixtures/fittings, planning, alterations and/or lease details
- Appliances & services are untested, dimensions are approximate and floor plans are not to scale
- Through a Homewise Home For Life Plan people aged 60+ can secure this property for up to 59% less, by purchasing a Lifetime Lease.



53412492/20230502/GM/AH