



Price

£240,000

Leasehold

3x  1x  1x 

**Riverside Court, Lower
Southend Road,
Wickford, Essex, SS11**

OVER 60?

Secure this property
for up to **59% less!**



Video Tour available



**DOUGLAS
ALLEN**

Helping you move forwards



Main features

- 3 bedroom, 2nd floor apartment large kitchen, dining area.
- All purpose built bedrooms.
- Gated parking solely for residents of Riverside Court.
- Centrally located within walking distance to Wickford High Street and Railway Station.

Accommodation

SECOND FLOOR

Entrance Hall

Kitchen/Dining Area: 14'4 x 11'0 (4.37m x 3.36m)

Living Room: 11'0 x 10'4 (3.36m x 3.15m)

Bedroom 1: 13'4 x 8'6 (4.07m x 2.59m)

Bedroom 2: 13'5 x 6'5 (4.09m x 1.96m)

Bedroom 3 : 8'5 x 6'9 (2.57m x 2.06m)

Bathroom

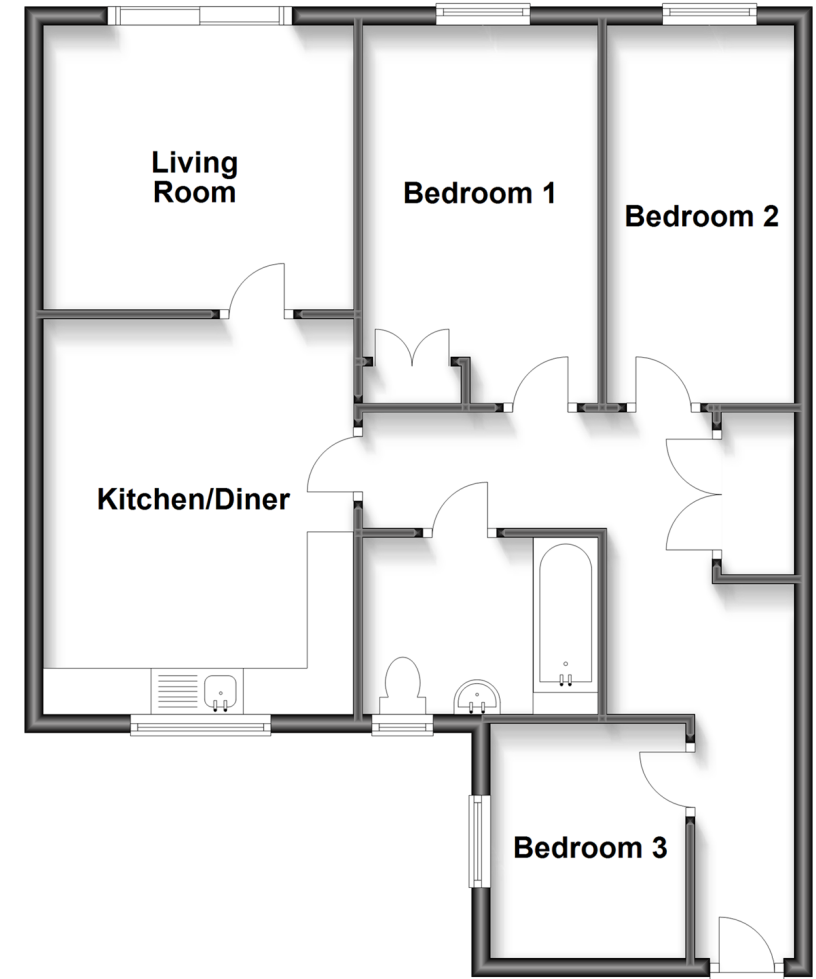
OUTSIDE

x1 Allocated parking space

Communal decked area

Second Floor

Approx. 69.6 sq. metres (748.8 sq. feet)



Call Wickford - 01268 561287 ■ douglasallen.co.uk

- Legal advice should be taken to verify fixtures/fittings, planning, alterations and/or lease details
- Appliances & services are untested, dimensions are approximate and floor plans are not to scale
- Through a Homewise Home For Life Plan people aged 60+ can secure this property for up to 59% less, by purchasing a Lifetime Lease.



53412451/20221124/GM/SP