

**OVER 60?**

You could get up to  
**59% off** the price!\*

**Price**

**£170,000**

**Leasehold**

1x  1x  1x 

**Arundel Road, Wickford,  
Essex, SS11**



**DOUGLAS  
ALLEN**

Helping you move forwards





## Main features

- 1 bedroom ground floor flat.
- Large rooms throughout.
- Security key entrance.
- Communal gardens and parking.
- ideal first time home or buy to let investment.

## Accommodation

### GROUND FLOOR

#### Entrance Hall

**Kitchen:** 8'3 x 7'10 (2.52m x 2.39m)

**Lounge/Diner:** 14'7 x 11'4 (4.45m x 3.46m)

**Bedroom:** 12'3 x 9'10 (3.74m x 3.00m)

#### Bathroom

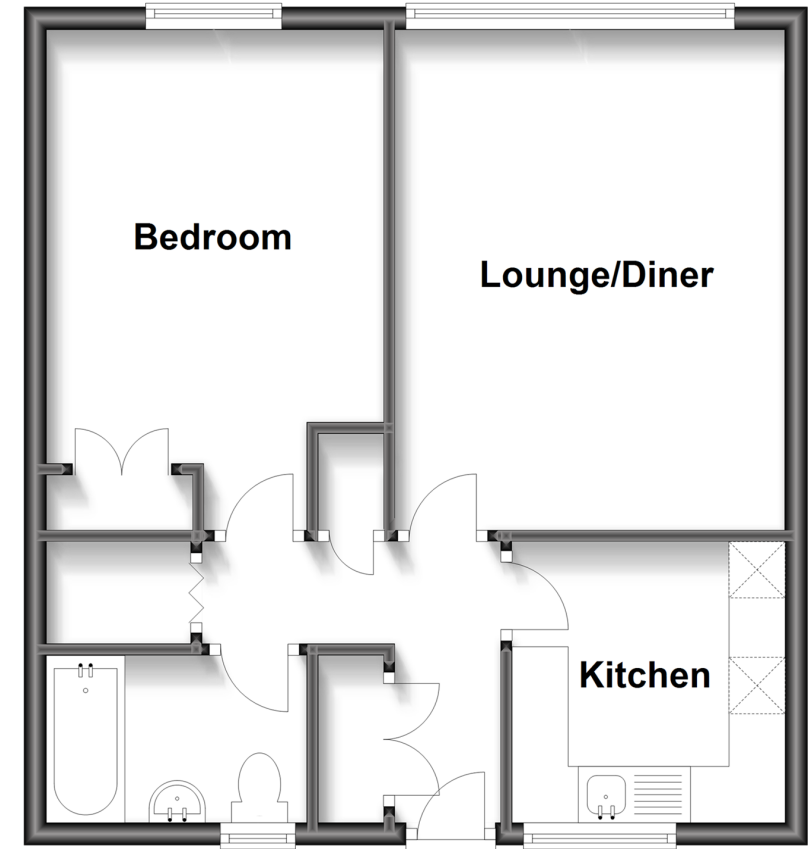
### OUTSIDE

#### Communal Garden

#### Communal Parking

## Ground Floor

Approx. 46.4 sq. metres (499.3 sq. feet)



**Call Wickford - 01268 561287 ■ [douglasallen.co.uk](http://douglasallen.co.uk)**

- Legal advice should be taken to verify fixtures/fittings, planning, alterations and/or lease details
- Appliances & services are untested, dimensions are approximate and floor plans are not to scale
- Our Homewise partnership offer a 'Home for Life' plan to buyers over 60, granting a lifetime lease for your protection and reducing the purchase price by up to 59%



53412417/20221018/SP/SP