



**Price**  
**£300,000**

**Freehold**

2x  1x  1x 

**Elizabeth Drive,  
Wickford, Essex, SS12**



Video Tour available



**DOUGLAS  
ALLEN**

Helping you move forwards





## Main features

- 2 Bedroom semi detached Bungalow
- Total refurbishment needed
- Extended to the rear for a larger kitchen/breakfast area
- 2 Garages to the rear
- Offered with vacant possession

## Accommodation

### ENTRANCE HALL

Lounge/Diner: 16'10 x 11'9 (5.13m x 3.58m)

Kitchen/Breakfast Area: 17'4 x 7'0 (5.29m x 2.14m)

Garden Room: 15'9 x 8'2 (4.80m x 2.49m)

Bedroom 1: 11'11 x 9'10 (3.63m x 3.00m)

Bedroom 2: 9'11 x 9'11 (3.02m x 3.02m)

Bathroom

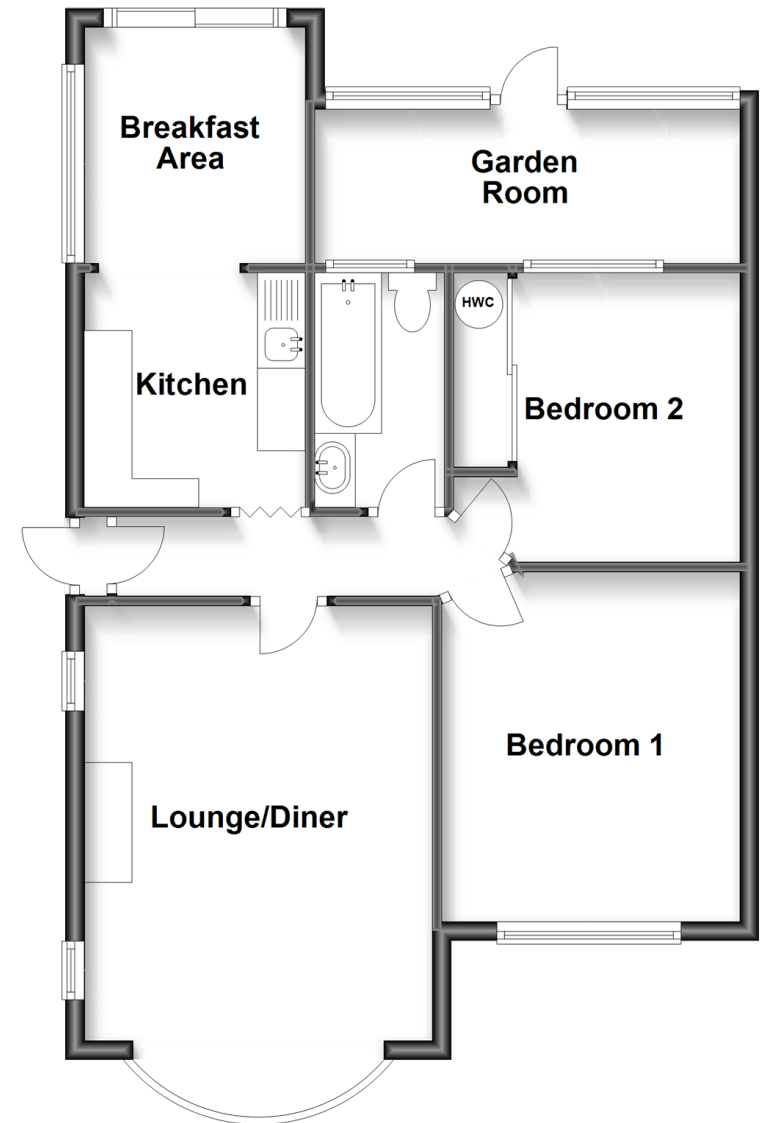
### OUTSIDE

2 Garages

Front and rear garden

## Ground Floor

Approx. 64.9 sq. metres (698.5 sq. feet)



**Call Wickford - 01268 561287 ■ [douglasallen.co.uk](http://douglasallen.co.uk)**

- Legal advice should be taken to verify fixtures/fittings, planning, alterations and/or lease details
- Appliances & services are untested, dimensions are approximate and floor plans are not to scale



53412408/20230427/SP/SP