



**Modern
Auction**

**£260,000
Freehold**

2x  1x  1x 

**Oakhurst Close,
Wickford, Essex, SS12**



Video Tour available



**DOUGLAS
ALLEN**

Helping you move forwards



Main features

- For sale by Modern Auction – T&C's apply
- Subject to an undisclosed Reserve Price
- Buyer's fees apply
- Offered with no onward chain
- Modern decor throughout
- Modern kitchen breakfast room and large lounge/diner
- Pleasant rear garden
- Quiet cul-de-sac location
- Garage at the rear via a shared driveway

Accommodation

GROUND FLOOR

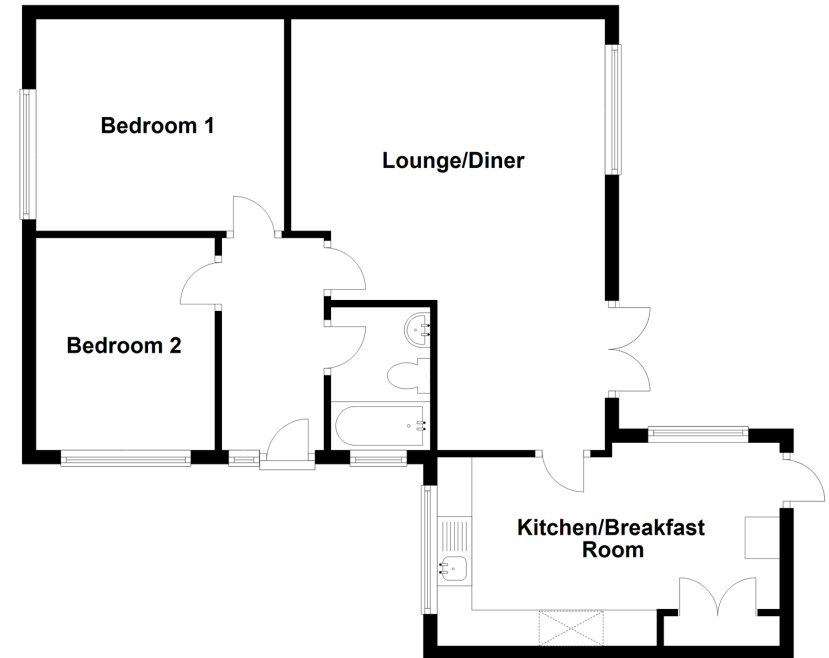
Hallway
 Lounge: 20'2 x 14'6 (6.15m x 4.42m)
 Kitchen/Breakfast Room: 16'2 x 9'7 (4.93m x 2.92m)
 Bedroom 1: 12'1 x 10'0 (3.69m x 3.05m)
 Bedroom 2: 9'8 x 8'7 (2.95m x 2.62m)
 Bathroom

OUTSIDE

Front and Rear Gardens
 Garage to the rear

Ground Floor

Approx. 65.2 sq. metres (702.1 sq. feet)



Call Wickford - 01268 561287 ■ douglasallen.co.uk

■ Legal advice should be taken to verify fixtures/fittings, planning, alterations and/or lease details

■ Appliances & services are untested, dimensions are approximate and floor plans are not to scale



53412319/20230406/TT/SP