



Price
£425,000

Freehold

2x  1x  1x 

**Bruce Grove, Wickford,
Essex, SS11**

OVER 60?

Secure this property
for up to **59% less!**

 **DOUGLAS
ALLEN**
Helping you move forwards



Main features

- Large plot offering potential to extend STPP
- Popular Shotgate Location
- Versatile living arrangements
- Off street parking leading to single garage
- Being sold with NO ONWARD CHAIN

Accommodation

GROUND FLOOR

Entrance Hallway

Kitchen: 10'3 x 9'3 (3.13m x 2.82m)

Lounge/Dining Area: 16'5 x 10'4 (5.01m x 3.15m)

Family Room/Bedroom 3: 13'8 x 12'0 (4.17m x 3.66m)

Bedroom 1: 13'8 x 11'7 (4.17m x 3.53m)

Bedroom 2: 11'0 x 8'9 (3.36m x 2.67m)

Shower Room

OUTSIDE

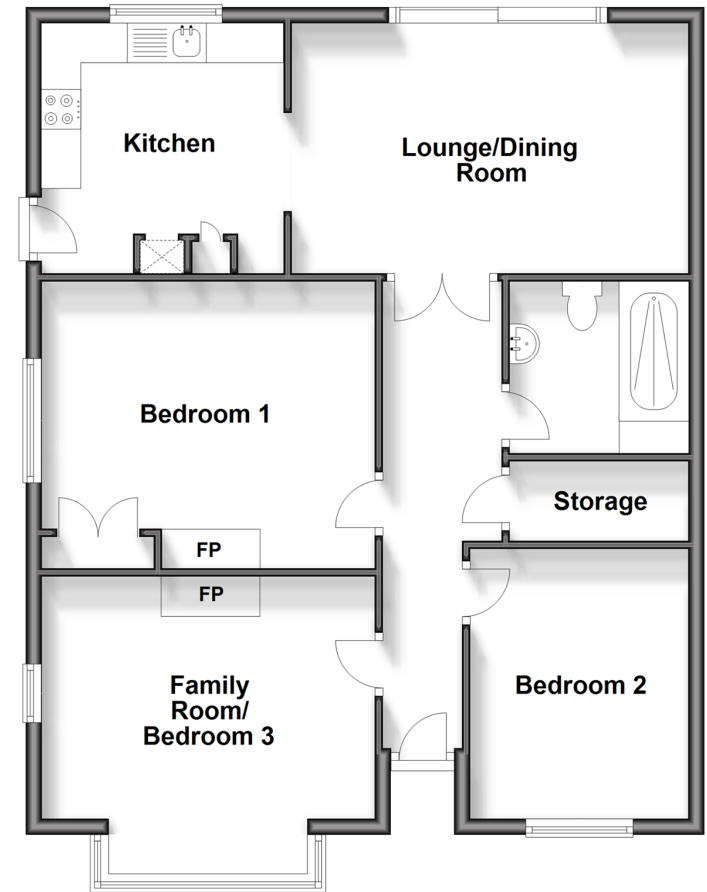
Garage

Rear Garden

Off Street Parking

Ground Floor

Approx. 82.0 sq. metres (882.4 sq. feet)



Call Wickford - 01268 561287 ■ douglasallen.co.uk

- Legal advice should be taken to verify fixtures/fittings, planning, alterations and/or lease details
- Appliances & services are untested, dimensions are approximate and floor plans are not to scale
- Through a Homewise Home For Life Plan people aged 60+ can secure this property for up to 59% less, by purchasing a Lifetime Lease.



53412304/20240314/GM/AH