



Price

£120,000

Leasehold

1x  1x  1x 

**Homeholly House,
Church End Lane,
Runwell, Wickford,
Essex, SS11**

OVER 60?

You could get up to
59% off the price!*



Video Tour available



**DOUGLAS
ALLEN**

Helping you move forwards



Main features

- 1 bedroom ground floor retirement apartment
- Recently redecorated and new carpets throughout
- Self contained living
- Communal facilities including residence lounge, gardens and laundry room
- Over 60's restriction
- Offered with vacant possession

Accommodation

GROUND FLOOR

Hallway

Lounge: 19'3 x 10'9 (5.87m x 3.28m)

Kitchen: 7'5 x 5'5 (2.26m x 1.65m)

Bedroom 1: 12'7 x 8'7 (3.84m x 2.62m)

Bathroom

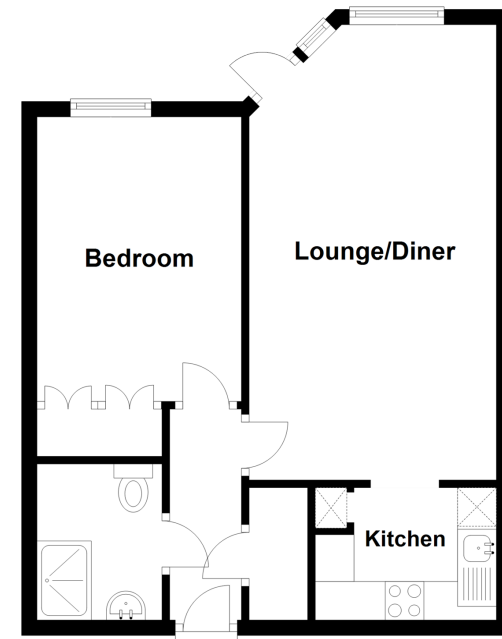
OUTSIDE

Communal Gardens

Communal Parking

Ground Floor

Approx. 41.8 sq. metres (450.1 sq. feet)



Call Wickford - 01268 561287 ■ douglasallen.co.uk

■ Legal advice should be taken to verify fixtures/fittings, planning, alterations and/or lease details
 ■ Our Homewise partnership offer a 'Home for Life' plan to buyers over 60, granting a lifetime lease for your protection and reducing the purchase price by up to 59%

■ Appliances & services are untested, dimensions are approximate and floor plans are not to scale



53412099/20211213/GW/SP