



Price
£750,000

Freehold

4x  1x  1x 

**Harrow Road, North
Benfleet, Wickford,
Essex, SS12**

OVER 60?

Secure this property
for up to **59% less!**

 **DOUGLAS
ALLEN**
Helping you move forwards

Accommodation

GROUND FLOOR

Entrance Porch

Entrance Hall

Bedroom 3: 12'11 x 10'1 (3.94m x 3.08m)

Bedroom 4: 12'11 x 10'0 (3.94m x 3.05m)

Lounge/Diner: 28'1 x 13'2 (8.57m x 4.02m)

Kitchen: 12'11 x 9'6 (3.94m x 2.90m)

Conservatory: 19'2 x 7'2 (5.85m x 2.19m)

Shower Room

FIRST FLOOR

Landing

Bedroom 2: 15'1 x 11'1 (4.60m x 3.38m)

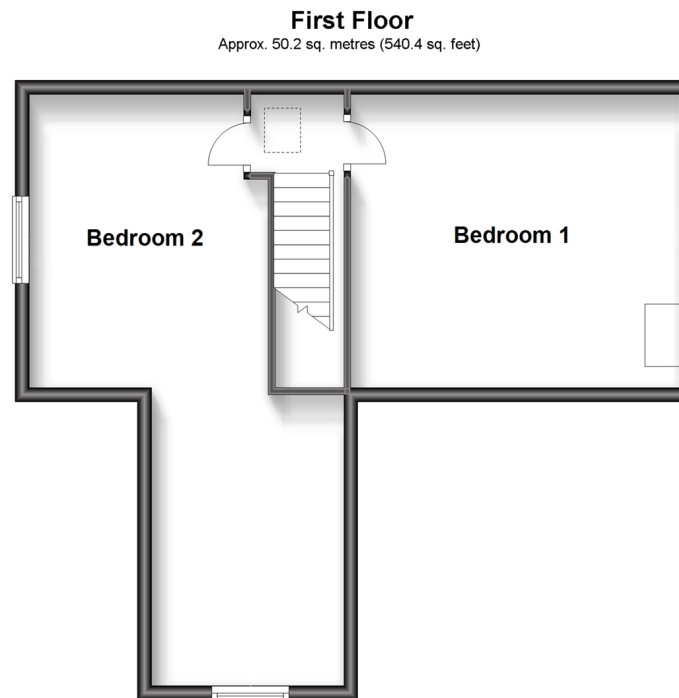
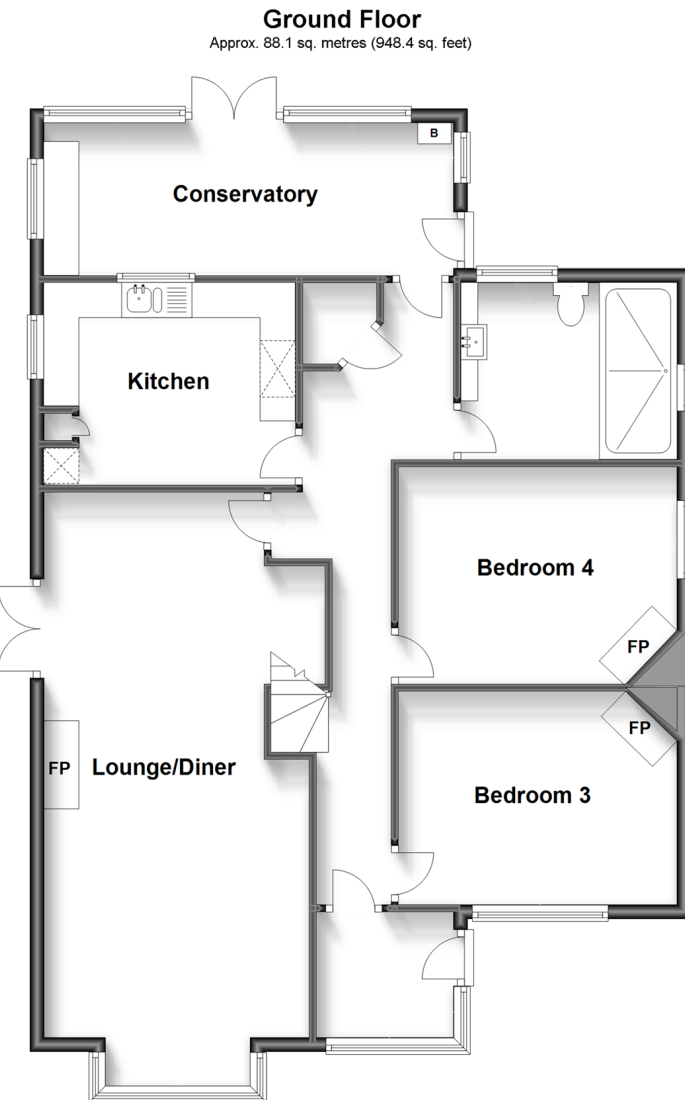
narrowing to 13'6 x 8'11 (4.12m x 2.72m)

Bedroom 1: 15'1 x 13'9 (4.60m x 4.19m)

OUTSIDE

1.5 Acre Plot

Double Garage/Workshop





Main features

- 3/4 bedroom detached house
- Charming cottage style throughout
- Double garage/workshop
- 1.364 acre plot with potential to extend or develop (STLAP)
- Perfect for anyone with a pony/small horse (subject to erecting a stable)



Nearest Schools

Primary Schools: Briscoe Primary and Nursery 1.7 miles, Kingston School 1.7 miles, St Margaret's C of E Voluntary Aided Primary, Bowers Gifford 1.7 miles

Secondary Schools: Cedar Hall School 2.3 miles, Barstable



Transport Information

Train Stations: Pitsea 3.7 miles, Wickford 4.7 miles, Hockley 4.9 miles



Address

Harrow Road, North Benfleet, Wickford, Essex, SS12



Directions

For directions to this property please contact us.



Call Wickford Branch 01268 561287 ■ douglasallen.co.uk



- Legal advice should be taken to verify fixtures/fittings, planning, alterations and/or lease details
- Appliances & services are untested, dimensions are approximate and floor plans are not to scale
- Through a Homewise Home For Life Plan people aged 60+ can secure this property for up to 59% less, by purchasing a Lifetime Lease.



53411412/20230710/SP/SP