



**Price**

**£475,000**

**Freehold**

2x  1x  1x 

**Canewdon Gardens,  
Wickford, Essex, SS11**





## Main features

- 2 Bedroom detached bungalow
- Modern throughout with recent wall insulation
- Large wrap around garden, with detached garage via own drive
- 2 Double bedrooms

## Accommodation

### ENTRANCE HALL

**Lounge/Dining Area:** 24'2 x 11'6 (7.37m x 3.51m)

**Kitchen:** 11'7 x 9'8 (3.53m x 2.95m)

**Bedroom 1:** 11'11 x 11'10 (3.63m x 3.61m)

**Bedroom 2:** 11'10 x 11'9 (3.61m x 3.58m)

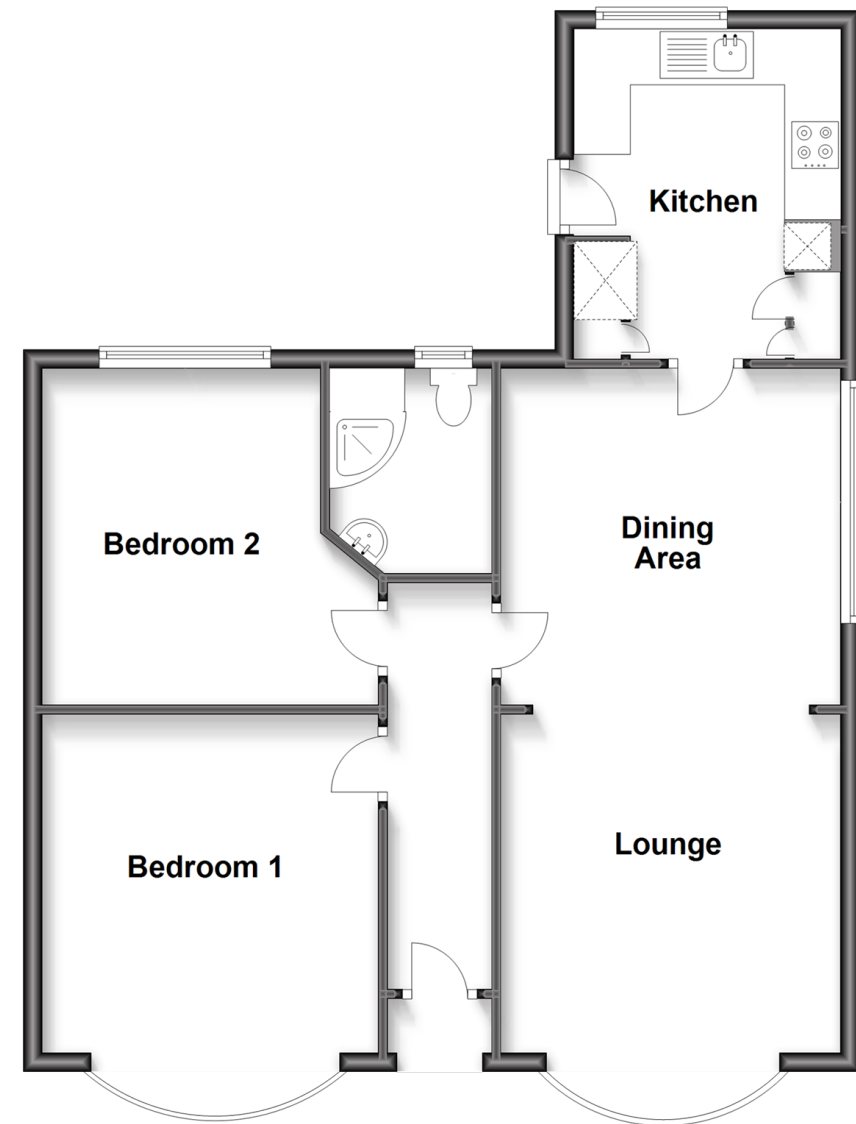
**Shower Room**

### OUTSIDE

**Rear and side garden**  
**Detached single garage**  
**Off street parking**

## Ground Floor

Approx. 73.0 sq. metres (785.8 sq. feet)



**Call Wickford - 01268 561287 ■ [douglasallen.co.uk](http://douglasallen.co.uk)**

- Legal advice should be taken to verify fixtures/fittings, planning, alterations and/or lease details
- Appliances & services are untested, dimensions are approximate and floor plans are not to scale