



Price

£500,000

Freehold

4x  2x  3x 

**Coppens Green,
Wickford, Essex, SS12**

OVER 60?

Secure this property
for up to **59% less!**



Video Tour available



**DOUGLAS
ALLEN**

Helping you move forwards



Main features

- Large, extended family home
- Modern kitchen, study and utility room
- En-suite shower room to bedroom 1
- Garage and off street parking
- Catchment of Oakfield Primary school as well as Bromfords and Beauchamps Secondary School

Accommodation

GROUND FLOOR

Porch
Hallway
Lounge: 17'4 x 11'7 (5.29m x 3.53m)
Kitchen: 12'1 x 9'6 (3.69m x 2.90m)
Utility Room: 8'4 x 5'0 (2.54m x 1.53m)
Dining Area: 12'6 x 8'9 (3.81m x 2.67m)
Family Area: 11'10 x 7'9 (3.61m x 2.36m)
Study: 13'6 x 5'9 (4.12m x 1.75m)
Cloakroom

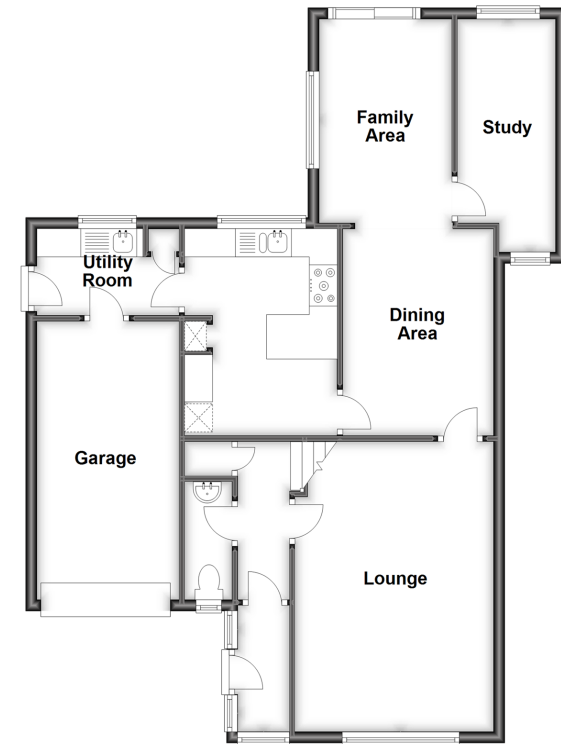
FIRST FLOOR

Landing
Bedroom 1: 12'10 x 9'3 (3.91m x 2.82m)
En-Suite Shower Room
Bedroom 2: 12'4 x 9'9 (3.76m x 2.97m)
Bedroom 3: 10'0 x 9'2 (3.05m x 2.80m)
Bedroom 4: 9'2 x 7'4 (2.80m x 2.24m)
Bathroom

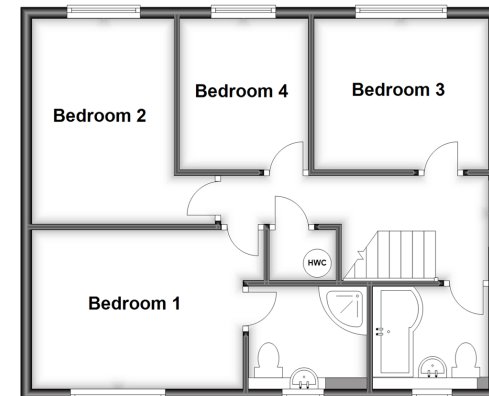
OUTSIDE

Rear Garden
Off Street Parking
Garage

Ground Floor
Approx. 64.7 sq. metres (696.9 sq. feet)



First Floor
Approx. 53.6 sq. metres (576.9 sq. feet)



Call Wickford - 01268 561287 ■ douglasallen.co.uk

- Legal advice should be taken to verify fixtures/fittings, planning, alterations and/or lease details
- Appliances & services are untested, dimensions are approximate and floor plans are not to scale
- Through a Homewise Home For Life Plan people aged 60+ can secure this property for up to 59% less, by purchasing a Lifetime Lease.



53403285/20240129/GM/SP