



**Price**  
**£425,000**

**Freehold**

3x  1x  2x 

**Albany Road, Wickford,  
Essex, SS12**

**OVER 60?**

Secure this property  
for up to **59% less!**

 **DOUGLAS  
ALLEN**  
Helping you move forwards





## Main features

- 4 bedroom end terrace house
- Recently fitted kitchen
- Well proportioned rooms throughout.
- Brick built summer house/ office in the rear garden
- off road parking

## Accommodation

### GROUND FLOOR

Entrance Hall

Lounge: 20'2 x 12'3 (6.15m x 3.74m)

Dining Room: 9'10 x 8'6 (3.00m x 2.59m)

Kitchen: 10'2 x 8'9 (3.10m x 2.67m)

Play Room/Bedroom 4: 12'3 x 7'7 (3.74m x 2.31m)

### FIRST FLOOR

Landing

Bedroom 1: 14'10 x 11'2 (4.52m x 3.41m)

Bedroom 2: 11'8 x 9'2 (3.56m x 2.80m)

Bedroom 3: 8'11 x 8'7 (2.72m x 2.62m)

Bathroom

### OUTSIDE

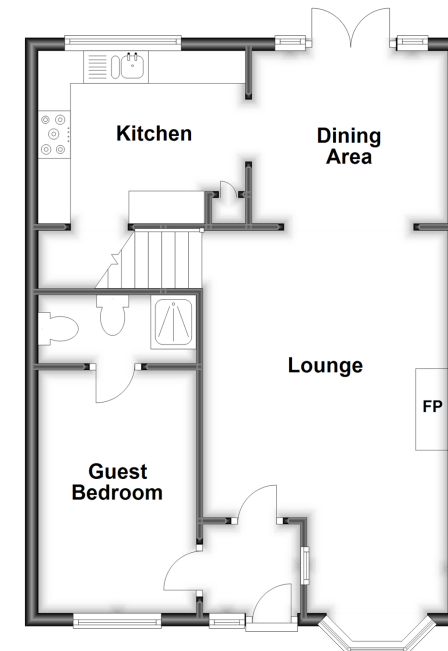
Rear Garden

Summer House/Office

Off Street Parking

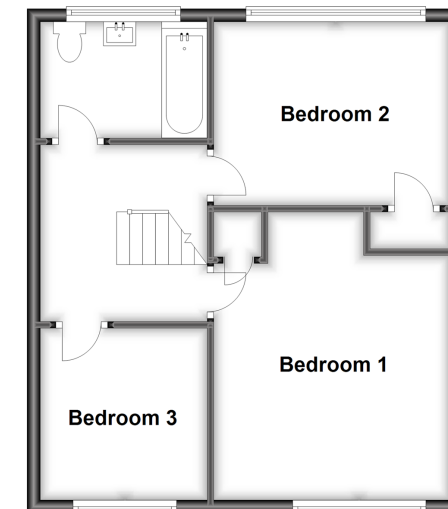
### Ground Floor

Approx. 54.7 sq. metres (588.8 sq. feet)



### First Floor

Approx. 46.4 sq. metres (499.3 sq. feet)



**Call Wickford - 01268 561287 ■ [douglasallen.co.uk](http://douglasallen.co.uk)**

- Legal advice should be taken to verify fixtures/fittings, planning, alterations and/or lease details
- Appliances & services are untested, dimensions are approximate and floor plans are not to scale
- Through a Homewise Home For Life Plan people aged 60+ can secure this property for up to 59% less, by purchasing a Lifetime Lease.



53402847/20230614/SP/SP