



Price
£525,000

Leasehold

2x  1x  1x 

**Pilkem Ridge Court,
Harford Street, London,
E1**

OVER 60?

Secure this property
for up to **59% less!**

 **DOUGLAS
ALLEN**
Helping you move forwards



Main features

- 2 bedroom ground floor conversion flat
- Own private garden
- Modern open plan lounge, dining area and kitchen
- Part of a landmark period development
- Close to Mile End Park and Regents Canal



Accommodation

GROUND FLOOR

Hallway

Living Area: 21'5 x 11'4 (6.53m x 3.46m)

Bedroom 1: 11'0 x 10'3 (3.36m x 3.13m)

Bedroom 2: 9'9 x 6'7 (2.97m x 2.01m) narrowing to 4'1 x 3'6 (1.25m x 1.07m)

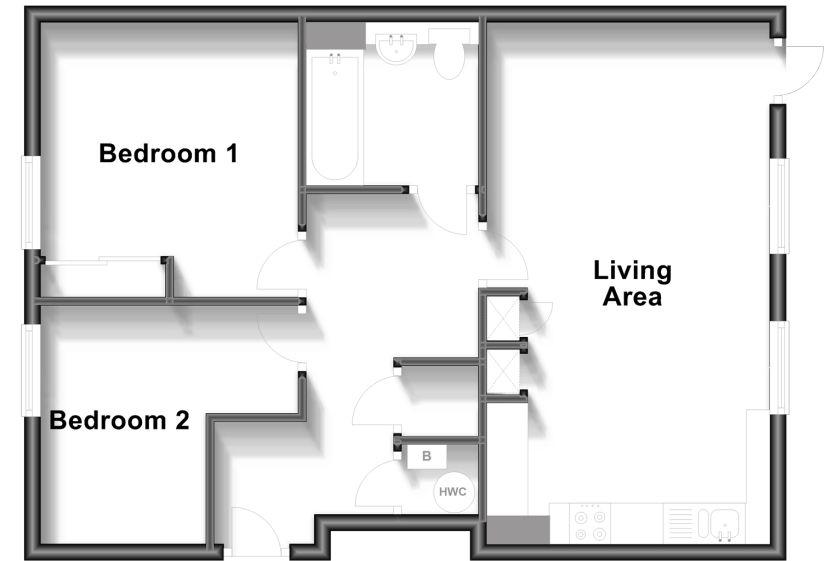
Bathroom

OUTSIDE

Private Garden

Ground Floor

Approx. 55.8 sq. metres (600.3 sq. feet)



Call Wanstead - 020 8530 3741 ■ douglasallen.co.uk

- A private rental licensing scheme applies to some properties in this area, please contact us before proceeding
- Legal advice should be taken to verify fixtures/fittings, planning, alterations and/or lease details
- Appliances & services are untested, dimensions are approximate and floor plans are not to scale
- Through a Homewise Home For Life Plan people aged 60+ can secure this property for up to 59% less, by purchasing a Lifetime Lease.



53212309/20230920/LA/RP