



OVER 60?

Secure this property
for up to **59% less!**

Guide Price

£775,000

Freehold

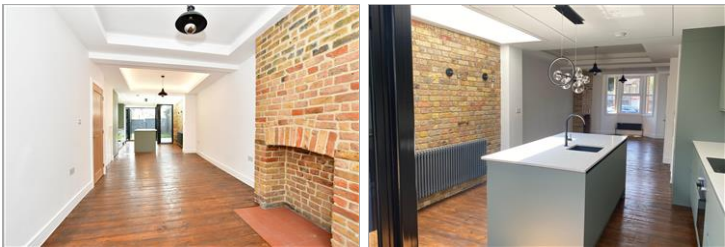
4x  3x  1x 

**Cheneys Road,
Leytonstone, E11**



**DOUGLAS
ALLEN**

Helping you move forwards



Main features

- A STUNNING 4-bed brick fronted Period Home
- Beautifully refurbished throughout
- Extended open-plan contemporary kitchen with bi-fold doors
- Two bathrooms & en-suite shower room
- Easy access to local transport and amenities

Accommodation

GROUND FLOOR

Hallway: 20'7 x 3'0 (6.28m x 0.92m)
Through Lounge: 21'8 x 10'6 (6.61m x 3.20m)
Kitchen/Dining Area: (L-shaped) 20'0 x 8'4 (6.10m x 2.54m) plus 8'7 x 3'9 (2.62m x 1.14m)

FIRST FLOOR

Landing: 11'7 x 4'8 (3.53m x 1.42m)
Bedroom 1: 13'3 x 11'0 (4.04m x 3.36m)
En Suite: 8'2 x 3'0 (2.49m x 0.92m)
Bedroom 2: 12'4 x 8'1 (3.76m x 2.47m)
Bathroom: 8'2 x 5'9 (2.49m x 1.75m)

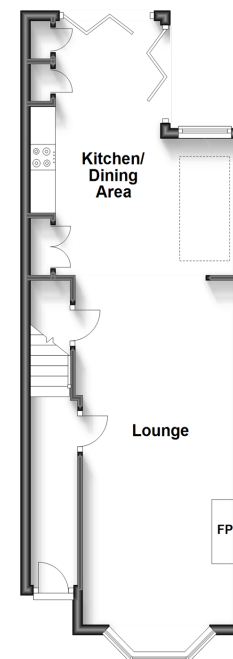
SECOND FLOOR

Landing: 5'0 x 4'0 (1.53m x 1.22m)
Bedroom 3: 13'0 x 7'6 (3.97m x 2.29m)
Bedroom 4: 15'3 x 12'3 (4.65m x 3.74m)
Bathroom: 7'2 x 3'9 (2.19m x 1.14m)

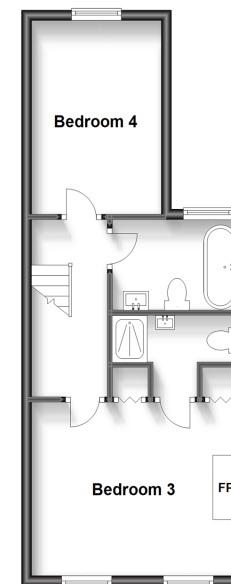
OUTSIDE

Front Garden
Rear Garden

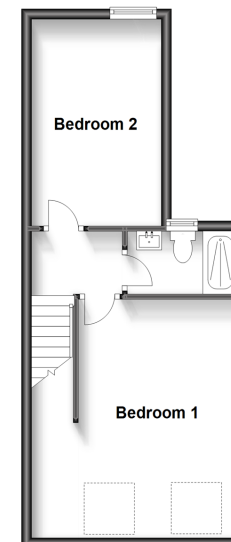
Ground Floor
Approx. 44.4 sq. metres (477.9 sq. feet)



First Floor
Approx. 38.6 sq. metres (415.6 sq. feet)



Second Floor
Approx. 35.3 sq. metres (380.3 sq. feet)



Call Wanstead - 020 8530 3741 ■ douglasallen.co.uk

- A private rental licensing scheme applies to some properties in this area, please contact us before proceeding
- Legal advice should be taken to verify fixtures/fittings, planning, alterations and/or lease details
- Appliances & services are untested, dimensions are approximate and floor plans are not to scale
- Through a Homewise Home For Life Plan people aged 60+ can secure this property for up to 59% less, by purchasing a Lifetime Lease.

EPC RATING	CURRENT:	POTENTIAL:
	D(66)	B(84)
53212267/20231019/RP/RP		