



Price

£230,000

Leasehold

1x  1x  1x 

**Kirkdale Road,
Leytonstone, E11**

OVER 60?

Secure this property
for up to **59% less!**

 **DOUGLAS
ALLEN**
Helping you move forwards



Main features

- No onward chain
- 1 bedroom apartment walking distance to the high street
- Ideal Investment property
- Modern refitted kitchen
- 0.3 miles from Leytonstone station

Accommodation

TOP FLOOR

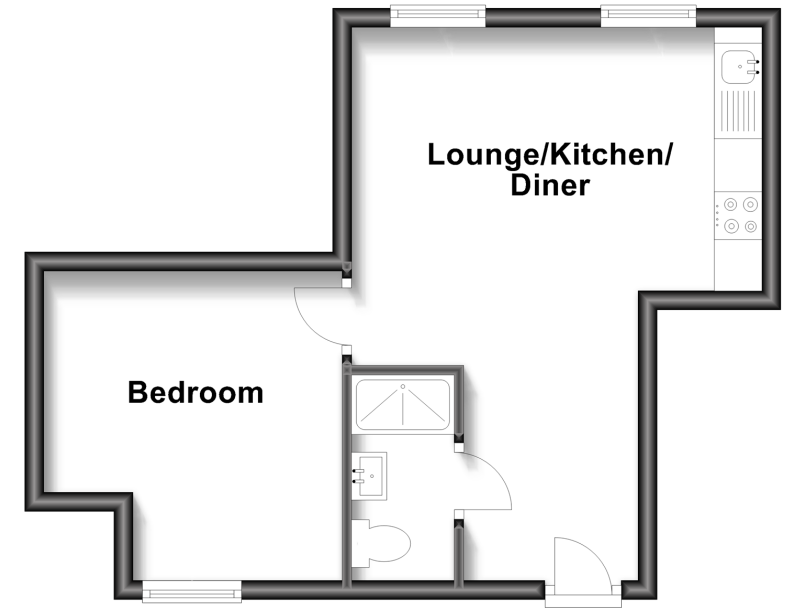
Lounge/Kitchen: 14'1 x 11'6 (4.30m x 3.51m) narrowing to 7'2 x 5'8 (2.19m x 1.73m)

Bedroom: 10'1 x 10'1 (3.08m x 3.08m)

Shower Room: 6'8 x 4'0 (2.03m x 1.22m)

First Floor

Approx. 30.6 sq. metres (329.2 sq. feet)



Call Wanstead - 020 8530 3741 ■ douglasallen.co.uk

- A private rental licensing scheme applies to some properties in this area, please contact us before proceeding
- Legal advice should be taken to verify fixtures/fittings, planning, alterations and/or lease details
- Appliances & services are untested, dimensions are approximate and floor plans are not to scale
- Through a Homewise Home For Life Plan people aged 60+ can secure this property for up to 59% less, by purchasing a Lifetime Lease.



53212236/20230902/KS/RP