



Price
£675,000

Freehold

3x  1x  2x 

**Pearcroft Road, London,
E11**

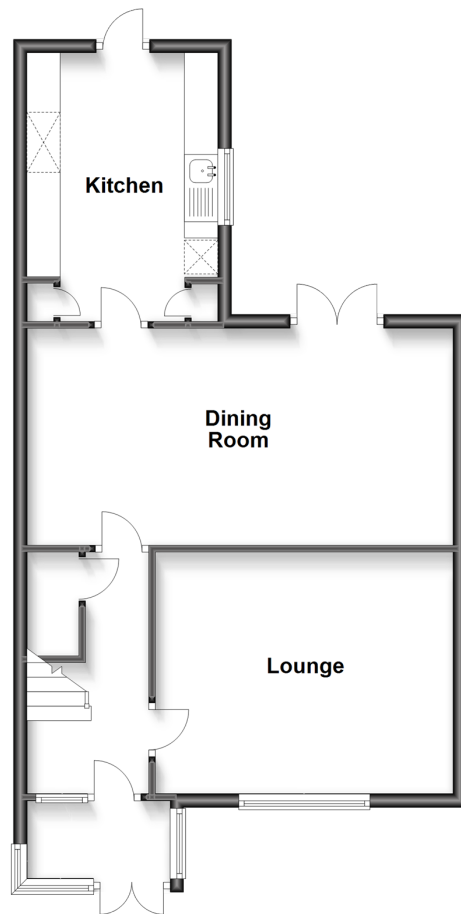
OVER 60?

Secure this property
for up to **59% less!**

 **DOUGLAS
ALLEN**
Helping you move forwards

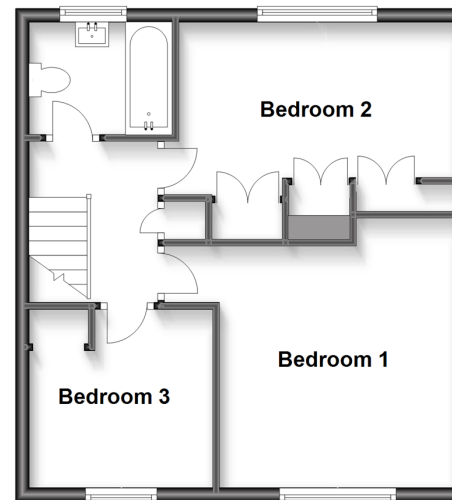
Ground Floor

Approx. 56.0 sq. metres (602.4 sq. feet)



First Floor

Approx. 44.3 sq. metres (476.5 sq. feet)



Accommodation

GROUND FLOOR

Lounge: 15'2 x 11'9 (4.63m x 3.58m)

Dining Room: 21'0 x 11'1 (6.41m x 3.38m)

Kitchen: 13'3 x 9'4 (4.04m x 2.85m)

OUTSIDE

Driveway

Rear Garden

FIRST FLOOR

Bedroom 1: 15'8 x 11'9 (4.78m x 3.58m)

Bedroom 2: 15'1 x 8'4 (4.60m x 2.54m)

Bedroom 3: 9'4 x 8'10 (2.85m x 2.69m)

Bathroom: 9'7 x 6'0 (2.92m x 1.83m)



Main features

- 3 bed semi-detached house with 2 reception rooms
- Outbuilding with shower room
- First floor bathroom
- Situated in Leytonstone Village
- Short walk to Leytonstone underground station and Francis Road



Nearest Schools

Primary Schools: Newport School 0.1 miles, Mayville Primary 0.2 miles, Dawlish Primary 0.4 miles

Secondary Schools: Connaught School for Girls 0.2 miles, Norlington School for Boys 0.3 miles, Tom Hood



Transport Information

Train Stations: Leytonstone High Road 0.3 miles, Leyton Midland Road 0.5 miles, Maryland 1.1 miles

Underground Leyton 0.4 miles, Leytonstone 0.5 miles, Stratford 1.4 miles



Address ending Mill Lane 2.0 miles, Bow Church 2.5 miles, Percroft Road, London, E11



Directions

For directions to this property please contact us.



Call Wanstead Branch 020 8530 3741 ■ douglasallen.co.uk



- A private rental licensing scheme applies to some properties in this area, please contact us before proceeding
- Appliances & services are untested, dimensions are approximate and floor plans are not to scale

- Legal advice should be taken to verify fixtures/fitings, planning, alterations and/or lease details
- Through a Homewise Home For Life Plan people aged 60+ can secure this property for up to 59% less, by purchasing a Lifetime Lease.



53212159/20230426/KS/LR