



**Price**  
**£375,000**

**Leasehold**

1x  1x  1x 

**Arundel House,  
Thornbury Way,  
Walthamstow, E17**

**OVER 60?**

Secure this property  
for up to **59% less!**

 **DOUGLAS  
ALLEN**  
Helping you move forwards





## Main features

- One double bedroom purpose-built apartment
- Found in excellent decorative order
- Balcony to the front
- Modern development
- Close to excellent transport links
- Walking distance to Lloyd Park

## Accommodation

### THIRD FLOOR

Lounge: 14'2 x 12'6 (4.32m x 3.81m)

Kitchen: 12'0 x 8'5 (3.66m x 2.57m)

Bedroom: 13'5 x 12'5 (4.09m x 3.79m)

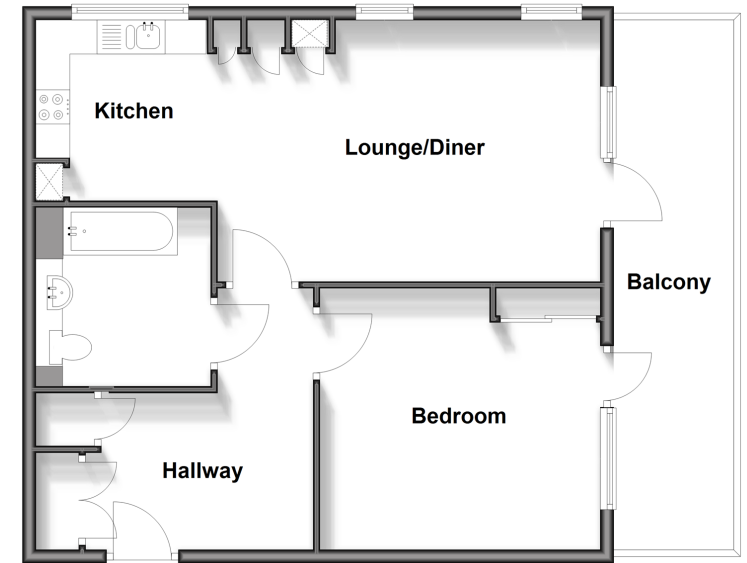
Bathroom: 8'6 x 8'1 (2.59m x 2.47m)

### OUTSIDE

Balcony

Communal Gardens

**Third Floor**  
Approx. 64.5 sq. metres (694.7 sq. feet)



**Call Walthamstow - 020 8509 0092 ■ [douglasallen.co.uk](http://douglasallen.co.uk)**

- A private rental licensing scheme applies to some properties in this area, please contact us before proceeding
- Legal advice should be taken to verify fixtures/fittings, planning, alterations and/or lease details
- Appliances & services are untested, dimensions are approximate and floor plans are not to scale
- Through a Homewise Home For Life Plan people aged 60+ can secure this property for up to 59% less, by purchasing a Lifetime Lease.



53117515/20240422/KS/S