



Price

£600,000

Leasehold

3x  3x  2x 

**Forest Road,
Walthamstow, London,
E17**



Main features

- Close to Blackhorse Road underground station
- Split level 3 bedroom, 2 bathrooms plus loft room
- Property to be sold with vacant possession
- Subject to restricted borrowing

Accommodation

FIRST FLOOR

Lounge/Diner: 15'9 x 9'7 (4.80m x 2.92m)
 Bedroom 3: 12'4 x 10'1 (3.76m x 3.08m)
 Kitchen/Breakfast Room: 11'2 x 10'6 (3.41m x 3.20m)
 Bathroom: 6'1 x 5'3 (1.86m x 1.60m)

SECOND FLOOR

Bedroom 1: 12'5 x 10'1 (3.79m x 3.08m)
 Bedroom 2: 15'9 x 9'4 (4.80m x 2.85m)

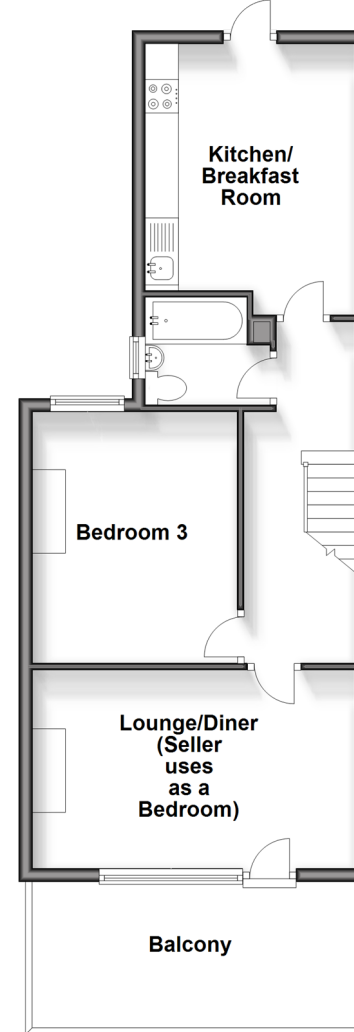
THIRD FLOOR

Loft Room: 16'11 x 15'0 (5.16m x 4.58m)
 En Suite

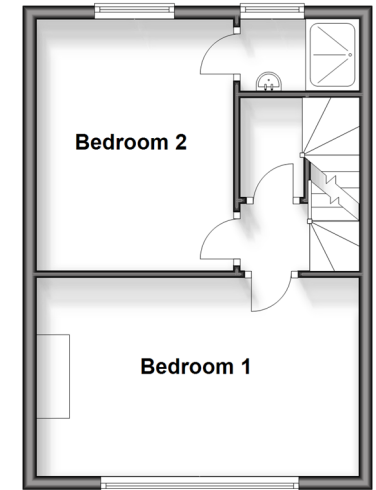
OUTSIDE

Balcony

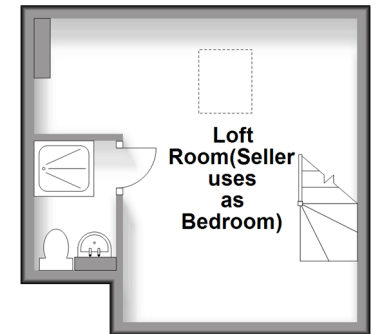
First Floor
 Approx. 50.5 sq. metres (543.9 sq. feet)



Second Floor
 Approx. 33.2 sq. metres (357.1 sq. feet)



Third Floor
 Approx. 21.0 sq. metres (226.2 sq. feet)



Call Walthamstow - 020 8509 0092 ■ douglasallen.co.uk

- A private rental licensing scheme applies to some properties in this area, please contact us before proceeding
- Legal advice should be taken to verify fixtures/fittings, planning, alterations and/or lease details
- Appliances & services are untested, dimensions are approximate and floor plans are not to scale



53117393/20240502/KS/MS