



**Price**  
**£350,000**

**Leasehold**

2x  1x  1x 

**Vicarage Road, London,  
E10**

 **DOUGLAS  
ALLEN**  
Helping you move forwards



## Main features

- Large kitchen and two good sized bedrooms
- Off street parking
- Within walking distance of Leyton Midland Road station
- Close to a variety of shops, bars and restaurants

## Accommodation

### FIRST FLOOR

Dining Room: 14'3 x 11'0 (4.35m x 3.36m)

Kitchen: 10'6 x 10'3 (3.20m x 3.13m)

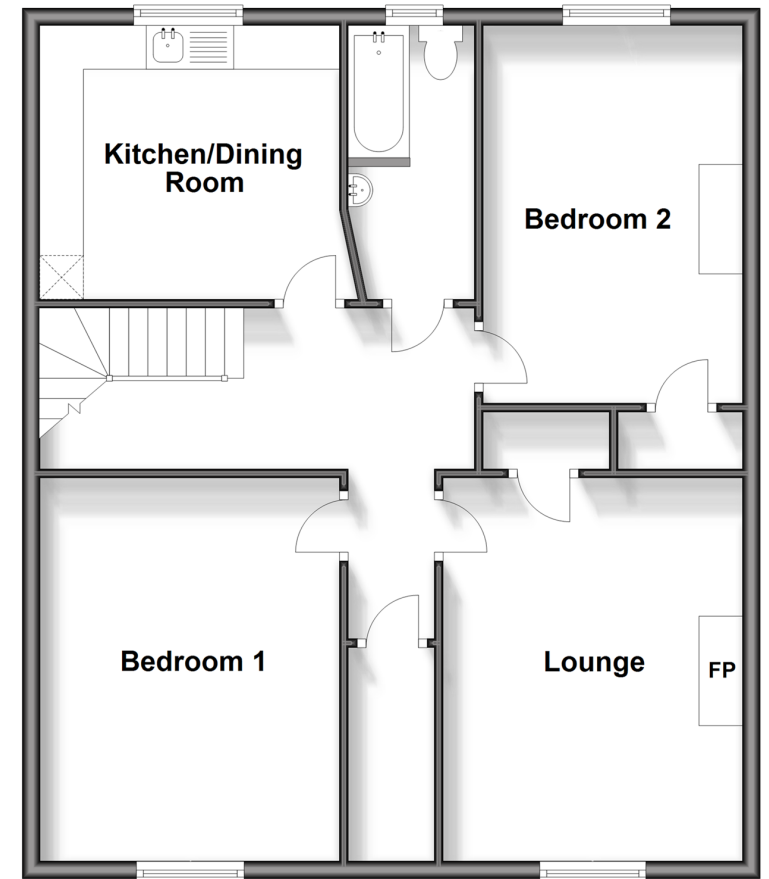
Bedroom 1: 13'3 x 11'5 (4.04m x 3.48m)

Bedroom 2: 14'0 x 9'9 (4.27m x 2.97m)

Bathroom

### First Floor

Approx. 76.7 sq. metres (825.1 sq. feet)



**Call Walthamstow - 020 8509 0092 ■ [douglasallen.co.uk](http://douglasallen.co.uk)**

- A private rental licensing scheme applies to some properties in this area, please contact us before proceeding
- Legal advice should be taken to verify fixtures/fittings, planning, alterations and/or lease details
- Appliances & services are untested, dimensions are approximate and floor plans are not to scale