



**Price**

**£260,000**

**Leasehold**

1x  1x  1x 

**Teresa Mews,  
Walthamstow, E17**





## Main features

- **Secluded retirement apartment**
- **Recently redecorated throughout**
- **Over 60s only**
- **Very quiet location central to Walthamstow**
- **On the doorstep of a variety of shops, bars & restaurants**

## Accommodation

### GROUND FLOOR

Lounge: (L-shaped) 14'3 x 9'6 (4.35m x 2.90m) plus 7'8 x 6'3 (2.34m x 1.91m)

Kitchen: 7'8 x 7'3 (2.34m x 2.21m)

Bedroom: 10'3 x 9'7 (3.13m x 2.92m)

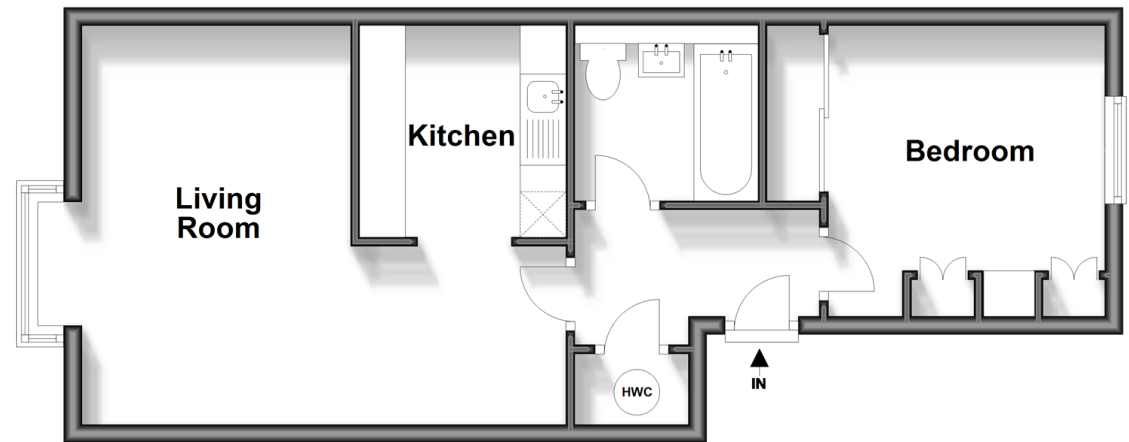
Bathroom

### OUTSIDE

Communal Gardens

### Ground Floor

Approx. 43.9 sq. metres (472.5 sq. feet)



**Call Walthamstow - 020 8509 0092 ■ [douglasallen.co.uk](http://douglasallen.co.uk)**

■ A private rental licensing scheme applies to some properties in this area, please contact us before proceeding

■ Appliances & services are untested, dimensions are approximate and floor plans are not to scale

■ Legal advice should be taken to verify fixtures/fittings, planning, alterations and/or lease details



53117368/20231201/DM/S