



Price
£300,000

Leasehold

1x  1x  1x 

**Markhouse Road,
Walthamstow, E17**

 **DOUGLAS
ALLEN**
Helping you move forwards



Main features

- Ground floor garden apartment
- Larger than average
- Chain free
- Large rear garden with a bright and sunny aspect
- Can be extended subject to the standard local authority permissions

Accommodation

GROUND FLOOR

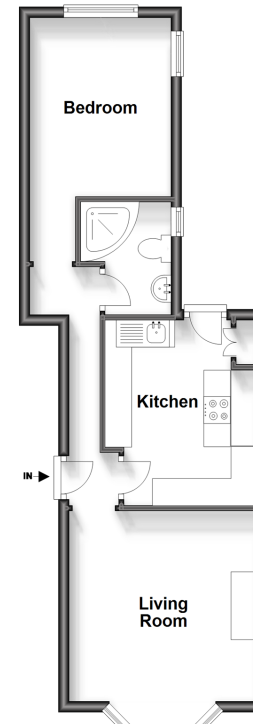
Entrance Hallway
 Kitchen : 11'2 x 8'2 (3.41m x 2.49m)
 Living Room : 13'9 x 10'2 (4.19m x 3.10m)
 Shower Room
 Bedroom : 10'3 x 9'6 (3.13m x 2.90m)

OUTSIDE

Front Garden
 Rear Garden

Ground Floor

Approx. 40.0 sq. metres (430.1 sq. feet)



Call Walthamstow - 020 8509 0092 ■ douglasallen.co.uk

- A private rental licensing scheme applies to some properties in this area, please contact us before proceeding
- Legal advice should be taken to verify fixtures/fittings, planning, alterations and/or lease details
- Appliances & services are untested, dimensions are approximate and floor plans are not to scale



53117271/20240210/KS/S