



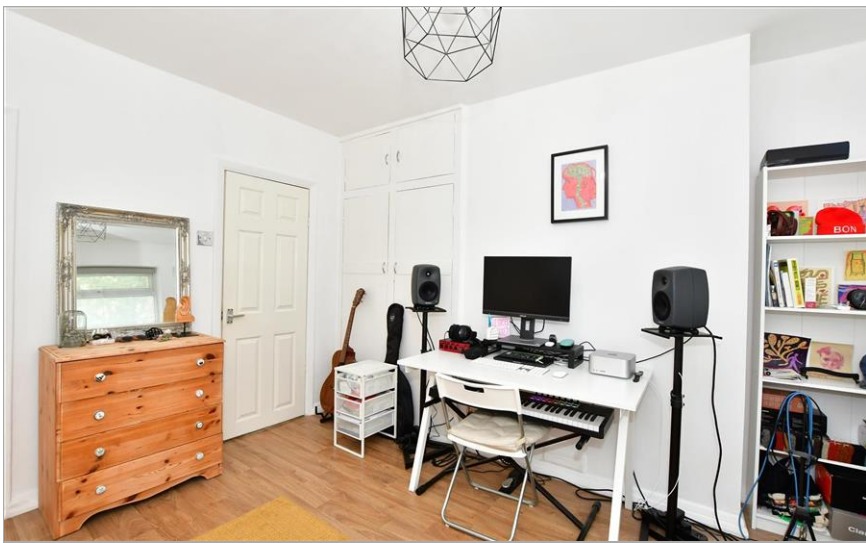
**Price**  
**£230,000**

**Leasehold**

1x  1x  1x 

**Chessington Mansions,  
Albany Road, Leyton,  
E10**





## Main features

- Charming first floor apartment
- Ideal rental investment
- Well situated for all local amenities
- Would suit a first time buyer looking to get onto the property ladder
- Located in the heart of Leyton with its excellent transport links

## Accommodation

### FIRST FLOOR

Entrance

Living Room: 13'9 x 9'3 (4.19m x 2.82m)

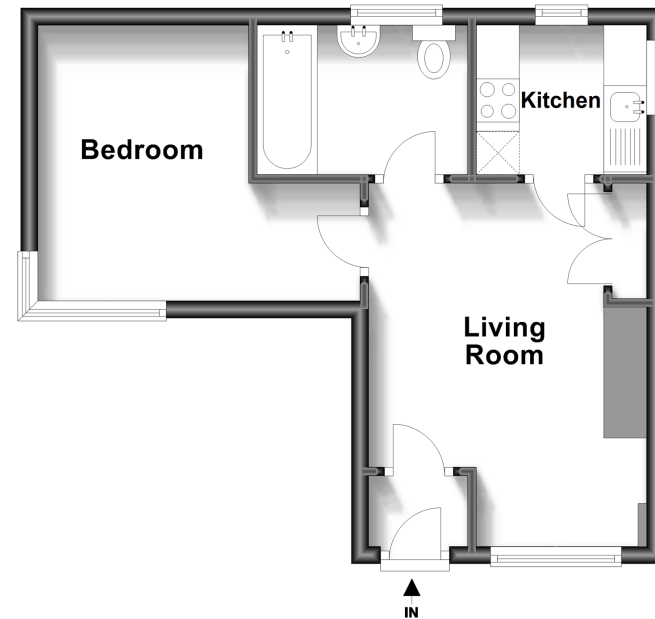
Kitchen : 6'4 x 5'5 (1.93m x 1.65m)

Bedroom : 12'2 x 9'6 (3.71m x 2.90m)

Bathroom

### First Floor

Approx. 31.9 sq. metres (343.0 sq. feet)



Call Walthamstow - 020 8509 0092 ■ [douglasallen.co.uk](http://douglasallen.co.uk)

■ A private rental licensing scheme applies to some properties in this area, please contact us before proceeding

■ Appliances & services are untested, dimensions are approximate and floor plans are not to scale

■ Legal advice should be taken to verify fixtures/fittings, planning, alterations and/or lease details



53117193/20230812//S