



**Offers In  
Excess Of  
£240,000  
Leasehold**

1x  1x  1x 

**Manhattan Apartments,  
Clifford Road,  
Walthamstow, E17**



## Main features

- Warehouse conversion
- Integrated SMEG appliances
- 245 year lease
- Extremely modern throughout
- A short walk to the bustling and vibrant Walthamstow Central
- The Lloyd Park area can be found a short walk away



## Accommodation

### GROUND FLOOR

Kitchen/Lounge/Dining Room : 14'8 x 12'5 (4.47m x 3.79m)

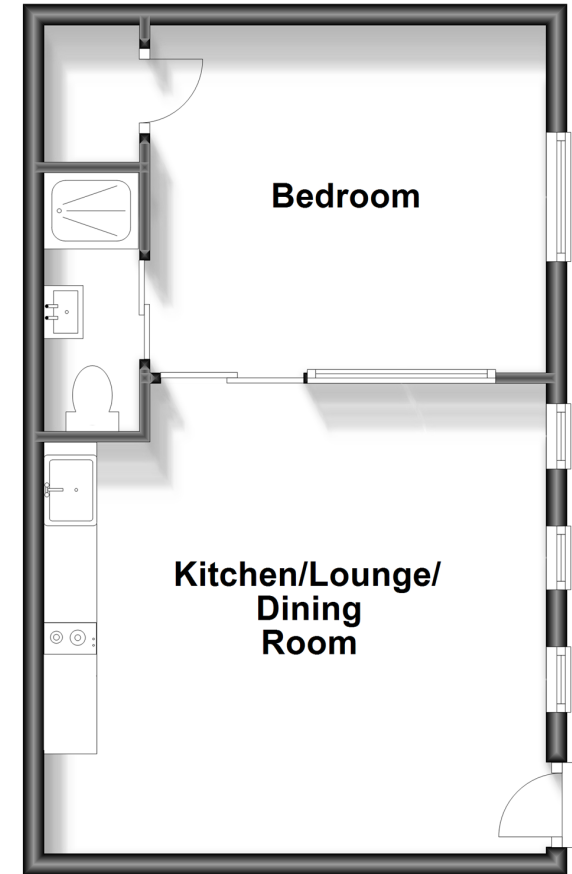
Bedroom: 9'2 x 9'1 (2.80m x 2.77m)

En Suite Shower Room



## Ground Floor

Approx. 37.1 sq. metres (399.5 sq. feet)



Call Walthamstow Branch 020 8509 0092 ■ [douglasallen.co.uk](http://douglasallen.co.uk)