



Price
£255,000

Leasehold

1x  1x  1x 

**High Street,
Walthamstow, E17**



Main features

- One bedroom split level apartment
- Well- Presented and pleasantly spacious
- Walthamstow Central just minutes away
- Lease Circa 96
- Circa 685 Sq Ft
- An early viewing is advised

Accommodation

SECOND FLOOR

Entrance Hall

Lounge/Dining/Kitchen Area : 14'9 (4.50m) x 10'8 at narrowest point (3.25m) narrowing to 7'3 (2.21m)

THIRD FLOOR

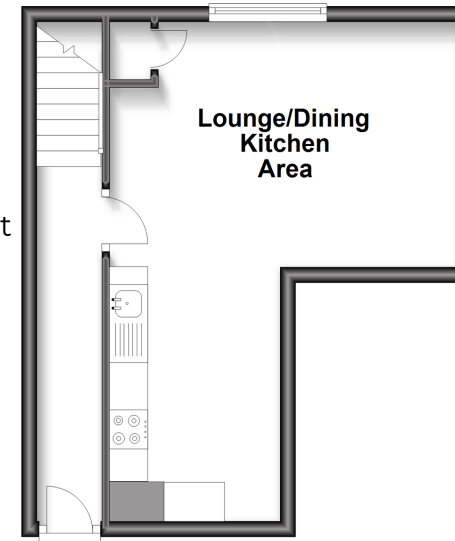
Hallway

Bedroom : 15'11 x 9'10 (4.85m x 3.00m)

Shower Room

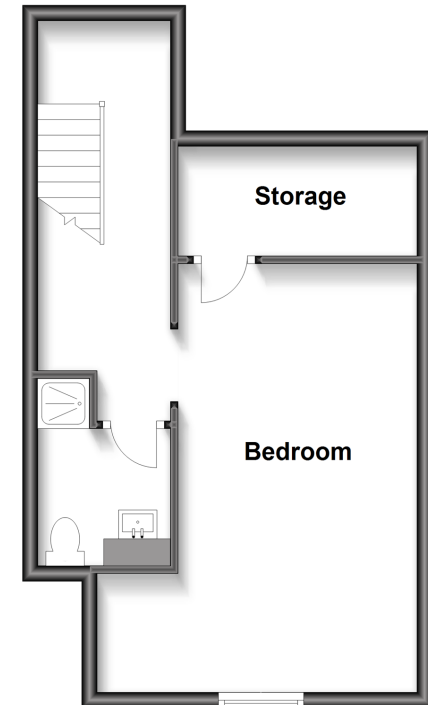
Second Floor

Approx. 27.6 sq. metres (297.3 sq. feet)



Third Floor

Approx. 36.1 sq. metres (388.5 sq. feet)



Call Walthamstow - 020 8509 0092 ■ douglasallen.co.uk

- A private rental licensing scheme applies to some properties in this area, please contact us before proceeding
- If buying to let, the energy rating will need to be improved to at least 'E' rating before you can let the property
- Legal advice should be taken to verify fixtures/fittings, planning, alterations and/or lease details
- Appliances & services are untested, dimensions are approximate and floor plans are not to scale

