



**Guide Price**  
**£250,000**

**Leasehold**

1x  1x  1x 

**Manhattan Apartments,  
Clifford Road, London,  
E17**



## Main features

- Stylish ground floor purpose built apartment
- Immaculate condition
- Underfloor heating throughout
- Ideal for first time buyers
- Close to local amenities and Wood Street Station

## Accommodation

### GROUND FLOOR

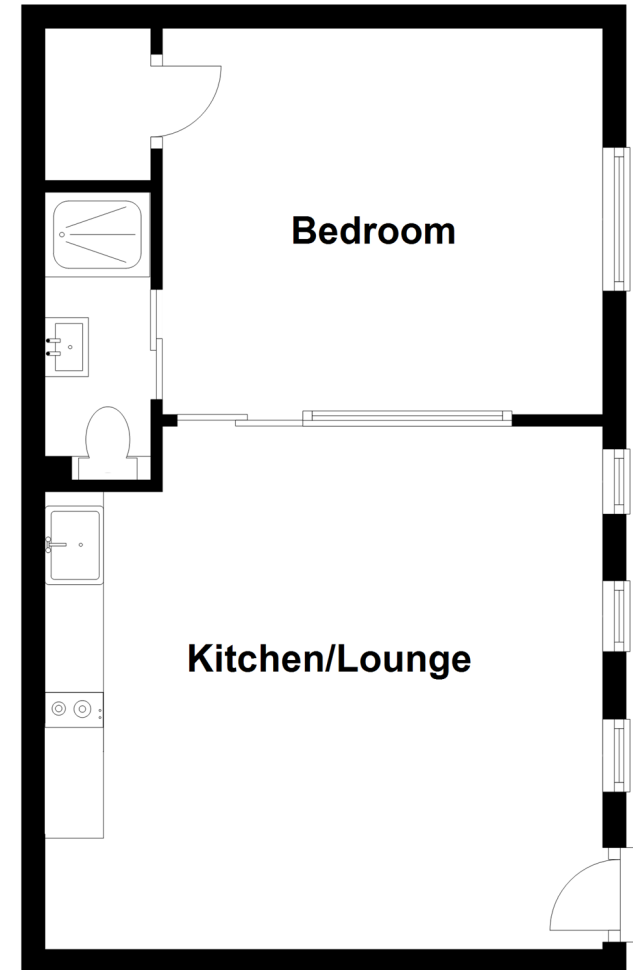
**Lounge/Kitchen Area:** 15'4 x 14'6  
(4.68m x 4.42m)

**Bedroom 1:** 13'0 x 10'7 (3.97m x 3.23m)

**Shower Room**

## Ground Floor

Approx. 37.1 sq. metres (399.5 sq. feet)



**Call Walthamstow - 020 8509 0092 ■ [douglasallen.co.uk](http://douglasallen.co.uk)**

- A private rental licensing scheme applies to some properties in this area, please contact us before proceeding
- Legal advice should be taken to verify fixtures/fittings, planning, alterations and/or lease details
- Appliances & services are untested, dimensions are approximate and floor plans are not to scale



53116942/20220407/MT/AD