



Guide Price
£660,000

Freehold

3x  1x  1x 

**St. John's Road,
Walthamstow, E17**



Main features

- Lovely period house
- Good sized accommodation
- Close to Walthamstow Central
- A short walk to a bustling array of shops, bars and restaurants
- Potential to extend, subject to planning permissions

Accommodation

GROUND FLOOR

Entrance Hall
Lounge/Dining Room: 12'3 x 11'0 (3.74m x 3.36m)
Kitchen : 10'8 x 10'5 (3.25m x 3.18m)
Conservatory : 15'0 x 10'2 (4.58m x 3.10m)
Shower Room

FIRST FLOOR

Landing
Bedroom 1: 14'1 x 11'0 (4.30m x 3.36m)
Bedroom 2: 11'1 x 9'7 (3.38m x 2.92m)
Bedroom 3 : 10'5 x 9'8 (3.18m x 2.95m)

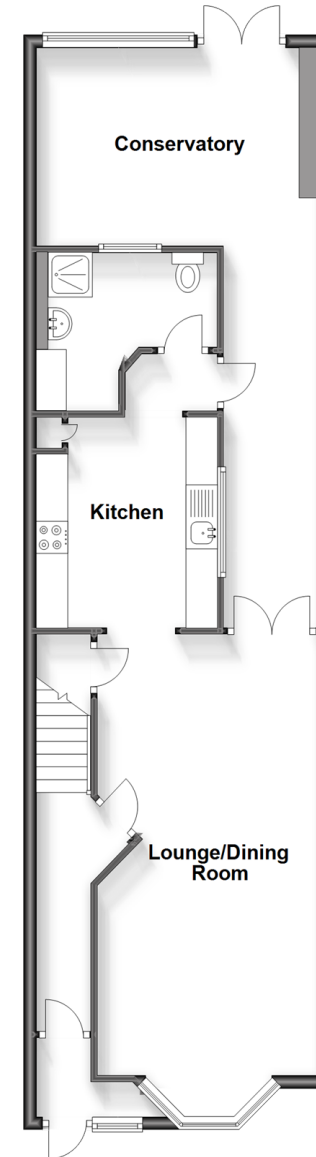
SECOND FLOOR

Loft Room

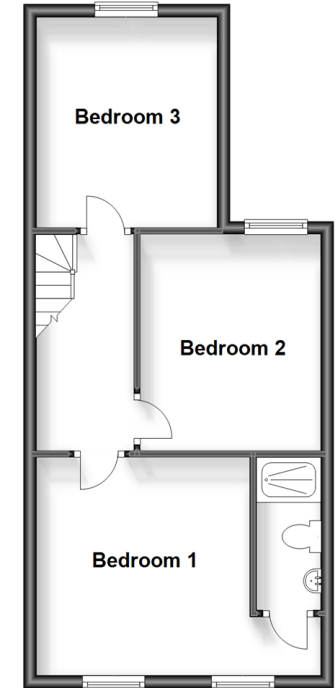
OUTSIDE

Front Garden
Rear Garden

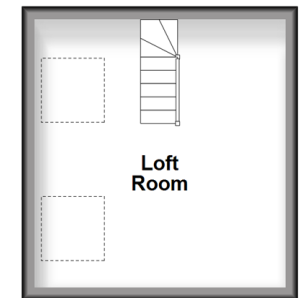
Ground Floor
Approx. 73.8 sq. metres (794.9 sq. feet)



First Floor
Approx. 40.8 sq. metres (439.6 sq. feet)



Second Floor
Approx. 16.7 sq. metres (179.3 sq. feet)



Call Walthamstow - 020 8509 0092 ■ douglasallen.co.uk

- A private rental licensing scheme applies to some properties in this area, please contact us before proceeding
- Legal advice should be taken to verify fixtures/fittings, planning, alterations and/or lease details
- Appliances & services are untested, dimensions are approximate and floor plans are not to scale



53116875/20231019/DM/S