



Guide Price
£700,000

Freehold

3x  1x  2x 

**Cromer Road, Leyton,
E10**



Main features

- Newly renovated period family home
- Chain free
- Wealth of period features
- Fantastic location
- Can be extended STP
- Located a short distance from the bustling and vibrant Walthamstow Central and Leyton

Accommodation

BASEMENT

Cellar: 12'6 x 6'4 (3.81m x 1.93m)

GROUND FLOOR

Lounge: 14'5 x 11'1 (4.40m x 3.38m)

Dining Room: 10'4 x 10'0 (3.15m x 3.05m)

Kitchen/Breakfast Room: 13'0 x 10'3 (3.97m x 3.13m)

FIRST FLOOR

Bedroom 1: 15'8 x 14'1 (4.78m x 4.30m)

Bedroom 2: 10'5 x 10'4 (3.18m x 3.15m)

Bedroom 3: 11'6 x 10'3 (3.51m x 3.13m)

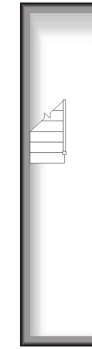
Bathroom

OUTSIDE

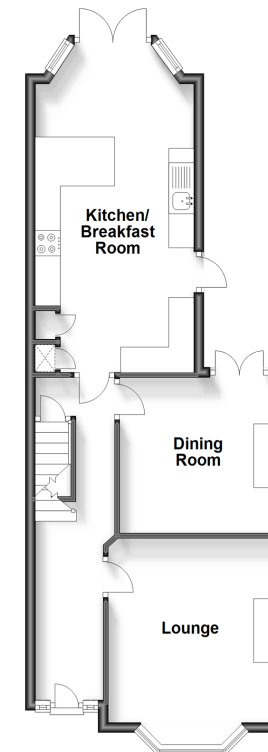
Front Garden

Rear Garden

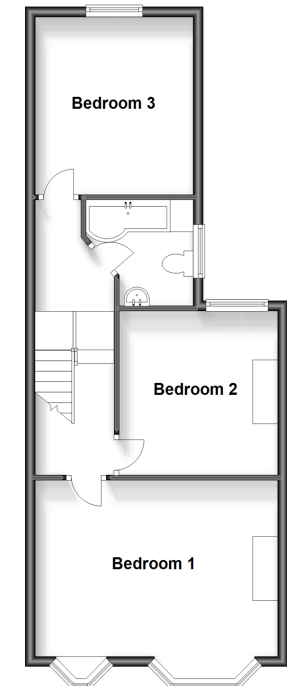
Basement
Approx. 9.0 sq. metres (96.7 sq. feet)



Ground Floor
Approx. 52.1 sq. metres (561.1 sq. feet)



Split Level First Floor
Approx. 51.2 sq. metres (551.5 sq. feet)



Call Walthamstow - 020 8509 0092 ■ douglasallen.co.uk

- A private rental licensing scheme applies to some properties in this area, please contact us before proceeding
- Legal advice should be taken to verify fixtures/fittings, planning, alterations and/or lease details
- Appliances & services are untested, dimensions are approximate and floor plans are not to scale



53116778/20231021/KS/S