



**Price**

**£375,000**

**Leasehold**

1x  1x  1x 

**Bergman House, Hoe  
Street, Walthamstow,  
E17**



**DOUGLAS  
ALLEN**

Helping you move forwards



## Main features

- One bedroom first floor apartment
- Spacious living accommodation
- Walking distance to Walthamstow Central Station
- Easy access to central London, with the Victoria Line and 24 hour bus station
- Communal garden and private terrace

## Accommodation

Entrance Hallway

Kitchen: 8'5 x 7'9 (2.57m x 2.36m)

Lounge/Diner: 18'9 x 10'9 (5.72m x 3.28m)

Bathroom

Bedroom: 14'2 x 9'9 (4.32m x 2.97m)

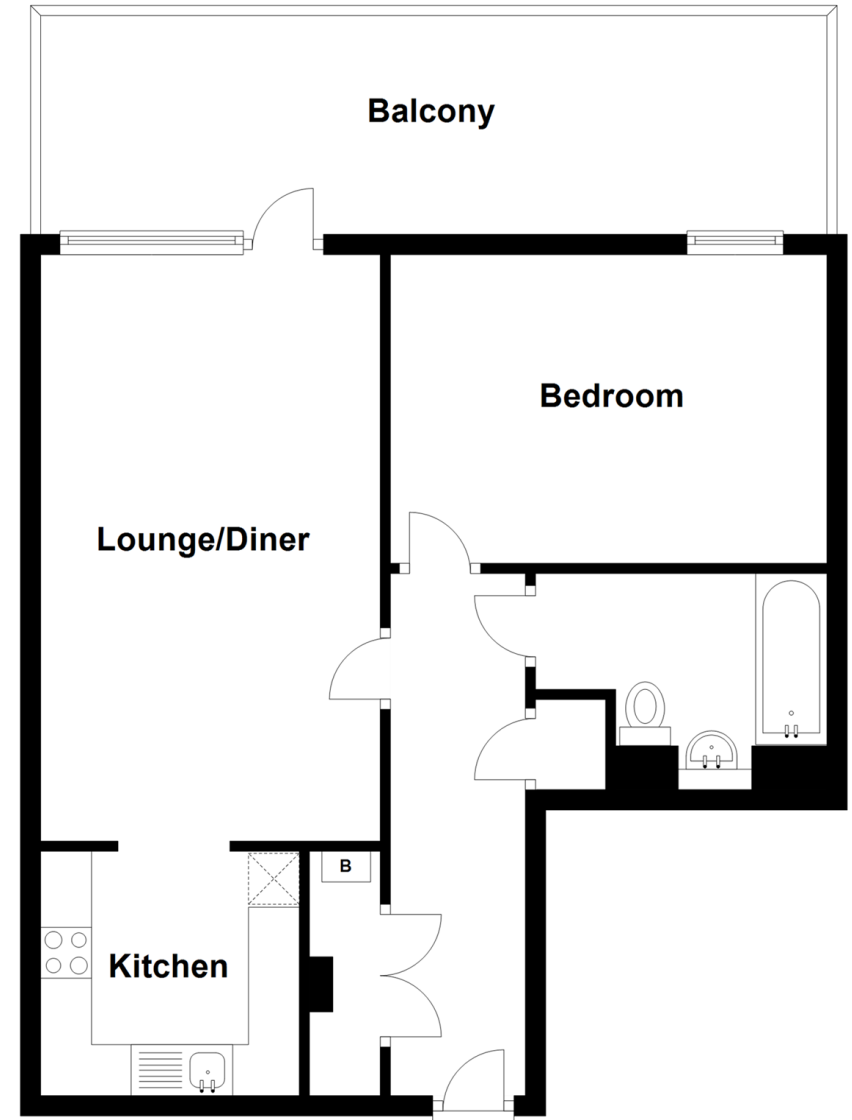
### OUTSIDE

Balcony

Communal Garden

## First Floor

Approx. 54.9 sq. metres (590.5 sq. feet)



**Call Walthamstow - 020 8509 0092 ■ [douglasallen.co.uk](http://douglasallen.co.uk)**

- A private rental licensing scheme applies to some properties in this area, please contact us before proceeding
- Legal advice should be taken to verify fixtures/fittings, planning, alterations and/or lease details
- Appliances & services are untested, dimensions are approximate and floor plans are not to scale



53116447/20230711//S