



Guide Price
£275,000

Leasehold

1x  1x  1x 

**Witham Court, Thant
Close, Leyton, E10**

OVER 60?

Secure this property
for up to **59% less!**

 **DOUGLAS
ALLEN**
Helping you move forwards



Main features

- **Second floor purpose-built apartment**
- **Good rental opportunity**
- **Located in the heart of the bustling and vibrant Leyton, E10**
- **Close to Leyton station**
- **Close to all local shops, restaurants and transport links**

Accommodation

SECOND FLOOR

Lounge/Diner: 12'2 x 10'8 (3.71m x 3.25m)

Kitchen: 6'5 x 6'5 (1.96m x 1.96m)

Bedroom Area: 9'6 x 7'5 (2.90m x 2.26m)

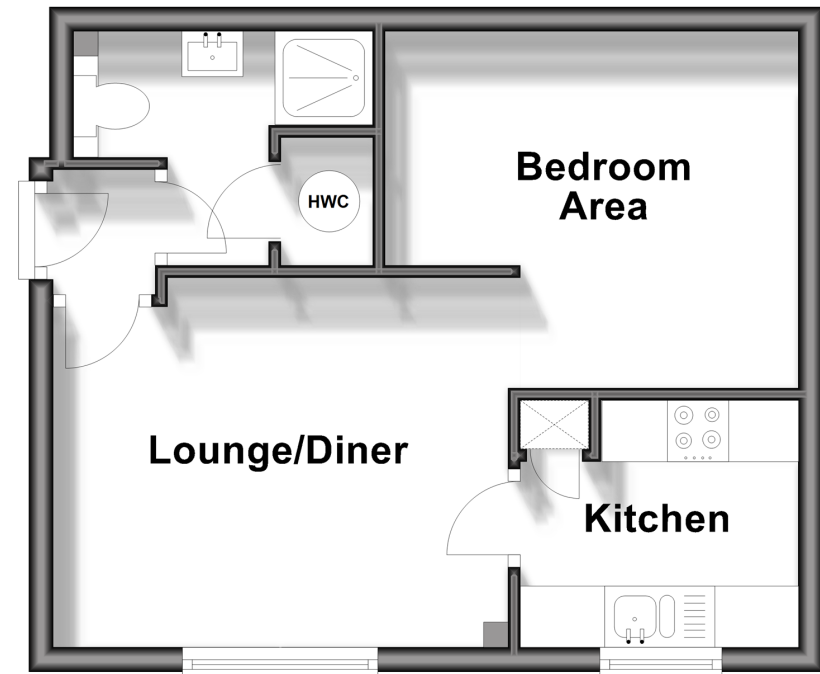
Bathroom

OUTSIDE

Communal Gardens
Parking Space

Second Floor

Approx. 30.4 sq. metres (327.4 sq. feet)



Call Walthamstow - 020 8509 0092 ■ douglasallen.co.uk

- A private rental licensing scheme applies to some properties in this area, please contact us before proceeding
- Legal advice should be taken to verify fixtures/fittings, planning, alterations and/or lease details
- Appliances & services are untested, dimensions are approximate and floor plans are not to scale
- Through a Homewise Home For Life Plan people aged 60+ can secure this property for up to 59% less, by purchasing a Lifetime Lease.



53116247/20240414/KS/DM