



Price
£260,000

Leasehold

1x  1x  1x 

**Willow Court, Trinity
Close, Leytonstone,
London, E11**

OVER 60?

Secure this property
for up to **59% less!**

 **DOUGLAS
ALLEN**
Helping you move forwards



Main features

- **1 bedroom ground floor purpose built flat**
- **2 parking spaces, communal gardens**
- **Chain free**
- **Ideal for first time buyers**
- **Convenient for Leytonstone High Road**
- **Close to overground & underground stations**

Accommodation

GROUND FLOOR

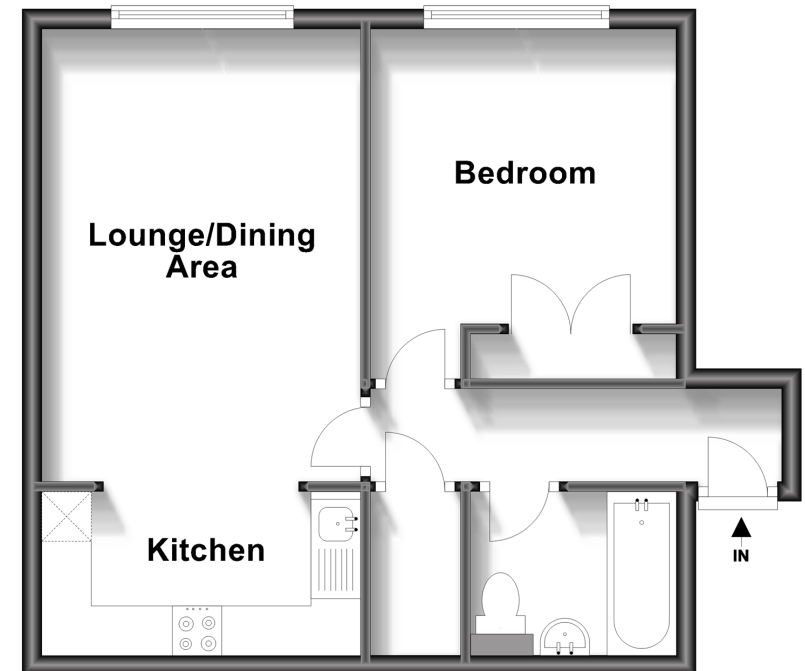
Hallway: 14'3 x 2'8 (4.35m x 0.81m)
 Lounge/Dining Area: 14'9 x 10'5 (4.50m x 3.18m)
 Kitchen: 10'5 x 5'7 (3.18m x 1.70m)
 Bedroom: 10'1 x 10'1 (3.08m x 3.08m)
 Bathroom: 6'7 x 5'7 (2.01m x 1.70m)

OUTSIDE

Communal Gardens
 Allocated Parking Space

Ground Floor

Approx. 41.5 sq. metres (447.2 sq. feet)



Call Wanstead - 020 8530 3741 ■ douglasallen.co.uk

- A private rental licensing scheme applies to some properties in this area, please contact us before proceeding
- Appliances & services are untested, dimensions are approximate and floor plans are not to scale

- Legal advice should be taken to verify fixtures/fittings, planning, alterations and/or lease details
- Through a Homewise Home For Life Plan people aged 60+ can secure this property for up to 59% less, by purchasing a Lifetime Lease.