



**Price**  
**£400,000**

**Share of  
Freehold**

2x  1x  1x 

**Barncroft Close,  
Loughton, Essex, IG10**





## Main features

- Ground floor maisonette with lovely sun room extension
- Great size enclosed rear garden
- Off road parking and garage en-bloc
- Share of Freehold
- Walking distance to Loughton tube station
- Bus routes 2 minutes walk away
- Easy access to the M25

## Accommodation

### GROUND FLOOR

Entrance Hall

Kitchen: 11'1 x 7'2 (3.38m x 2.19m)

Lounge/Dining Area: 17'1 x 10'5 (5.21m x 3.18m)

Sun Room Extension: 10'1 x 9'9 (3.08m x 2.97m)

Bedroom 1: 12'8 x 10'5 (3.86m x 3.18m)

Bedroom 2: 9'4 x 8'9 (2.85m x 2.67m)

Shower Room

### OUTSIDE

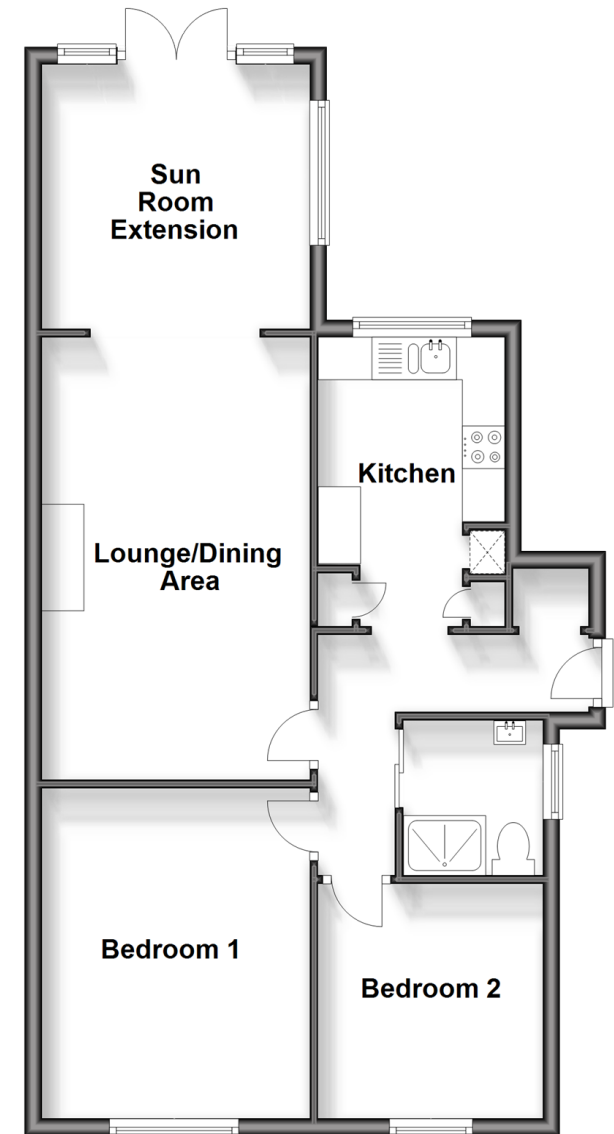
Rear Garden

Off Road Parking

Garage en-bloc

## Ground Floor

Approx. 64.1 sq. metres (690.2 sq. feet)



**Call Loughton - 020 8502 1326 ■ [douglasallen.co.uk](http://douglasallen.co.uk)**

- A private rental licensing scheme applies to some properties in this area, please contact us before proceeding
- Legal advice should be taken to verify fixtures/fittings, planning, alterations and/or lease details
- Appliances & services are untested, dimensions are approximate and floor plans are not to scale



52317274/20240405/GB/LL