



**Price**

**£515,000**

**Freehold**

3x  1x  1x 

**Barfields, Loughton,  
Essex, IG10**

**OVER 60?**

Secure this property  
for up to **59% less!**

 **DOUGLAS  
ALLEN**  
Helping you move forwards





## Main features

- Semi-detached house with utility room
- Immaculate condition throughout
- Stunning feature fireplace
- Landscaped rear garden
- Security bollards to the driveway
- Walking distance to the shops and station

## Accommodation

### GROUND FLOOR

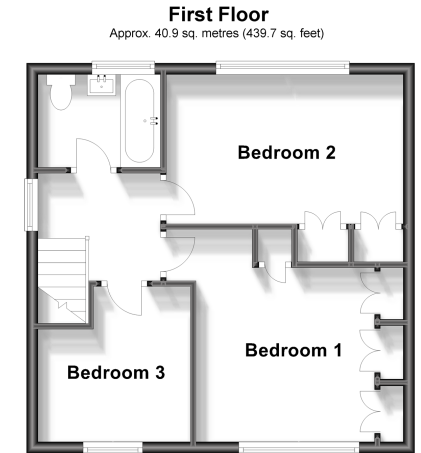
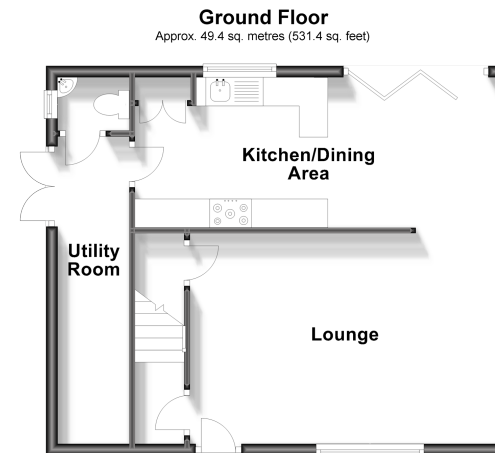
Lounge: 17'7 x 12'0 (5.36m x 3.66m)  
 Kitchen/Dining Area: 20'10 x 8'4 (6.35m x 2.54m)  
 Utility Room: 17'7 x 3'11 (5.36m x 1.19m)  
 Cloakroom

### FIRST FLOOR

Landing  
 Bedroom 1: 12'0 x 10'0 (3.66m x 3.05m)  
 Bedroom 2: 13'3 x 8'7 (4.04m x 2.62m)  
 Bedroom 3: 8'11 x 8'6 (2.72m x 2.59m)  
 Family Bathroom

### OUTSIDE

Rear Garden  
 Front Garden  
 Off Road Parking



**Call Loughton - 020 8502 1326 ■ [douglasallen.co.uk](http://douglasallen.co.uk)**

- This property is not standard construction which could affect mortgage lending, please contact us before proceeding
- Legal advice should be taken to verify fixtures/fittings, planning, alterations and/or lease details
- Through a Homewise Home For Life Plan people aged 60+ can secure this property for up to 59% less, by purchasing a Lifetime Lease.

- A private rental licensing scheme applies to some properties in this area, please contact us before proceeding
- Appliances & services are untested, dimensions are approximate and floor plans are not to scale