



**Price**  
**£550,000**

**Freehold**

2x  2x  1x 

**Clifton Road, Loughton,  
Essex, IG10**

**OVER 60?**

Secure this property  
for up to **59% less!**

 **DOUGLAS  
ALLEN**  
Helping you move forwards





## Main features

- Victorian terraced house
- Beautifully decorated throughout
- Jack and Jill en-suite to bedrooms 1 and 2
- Loft room
- Within walking distance of Loughton High Road
- Short drive to access the M25

## Accommodation

### GROUND FLOOR

Entrance Porch

Lounge: 11'11 x 10'10 (3.63m x 3.30m)

Dining Area: 12'10 x 12'0 (3.91m x 3.66m)

Kitchen: 21'7 x 10'10 maximum (6.58m x 3.30m)

Family Bathroom

### FIRST FLOOR

Landing

Bedroom 1: 11'11 x 10'11 (3.63m x 3.33m)

Bedroom 2: 10'9 x 7'9 (3.28m x 2.36m)

Jack and Jill En-Suite

### SECOND FLOOR

Loft Area: 12'4 x 10'9 (3.76m x 3.28m)

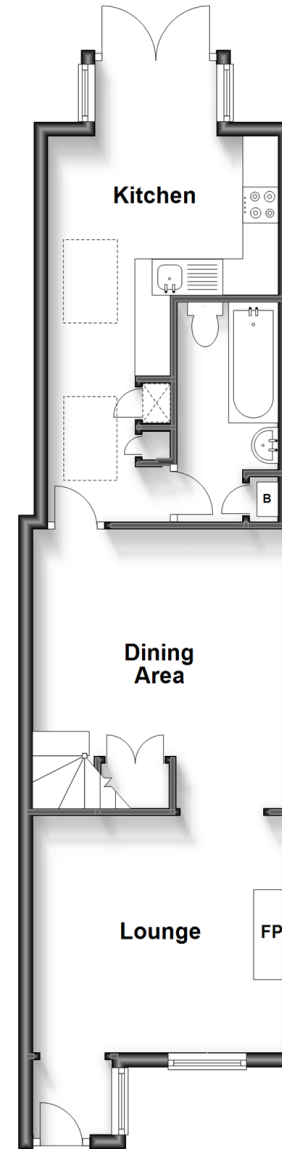
### OUTSIDE

Rear Garden

Front Garden

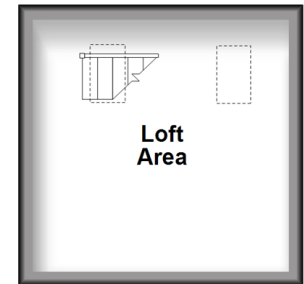
### Ground Floor

Approx. 47.2 sq. metres (508.0 sq. feet)



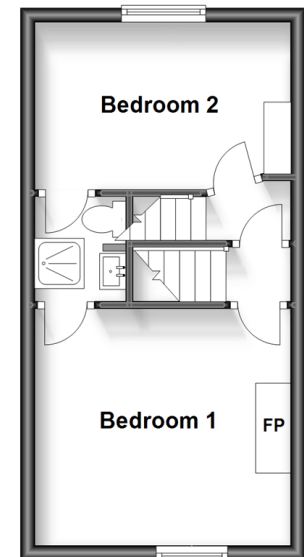
### Second Floor

Approx. 12.7 sq. metres (136.7 sq. feet)



### First Floor

Approx. 26.4 sq. metres (284.1 sq. feet)



**Call Loughton - 020 8502 1326 ■ [douglasallen.co.uk](http://douglasallen.co.uk)**

- A private rental licensing scheme applies to some properties in this area, please contact us before proceeding
- Legal advice should be taken to verify fixtures/fittings, planning, alterations and/or lease details
- Appliances & services are untested, dimensions are approximate and floor plans are not to scale
- Through a Homewise Home For Life Plan people aged 60+ can secure this property for up to 59% less, by purchasing a Lifetime Lease.



52317213/20230805/KA/PJ